

**City of Longview
Annex to the Natural Hazards Mitigation Plan for
Cowlitz County**

Update – May 20, 2011

Table of Contents

Title Page and Table of Contents.....	1
Adopting Resolution	3
Community Profile.....	6
Longview Risk Assessment.....	15
Longview Mitigation Initiatives.....	47

This page left intentionally blank.

Placeholder for Adopting Resolution

This page left intentionally blank.

I. Introduction

The City of Longview (Longview) has been working to make the population, neighborhoods, and facilities of Longview more resistant to the impacts of future disasters. In the course of updating its existing Hazard Mitigation Plan, Longview has been undertaking a comprehensive, detailed evaluation of the vulnerabilities of the city to all types of future natural, technological and societal hazards in order to identify ways to make the district more resistant to their impacts. This document reports the results of that planning process.

The vision of Longview is to create a disaster-resistant future for the city, by having:

- Hindsight into the mistakes of the past that made the district more vulnerable to the impacts of disasters.
- Insight into how the district is currently vulnerable to the impacts of disasters.
- Foresight on the means to make the district more resistant to the impacts of future disasters.
- Creation of a disaster-resistant community by the Year 2020.

A. Mission

The mission of the City of Longview Hazard Mitigation Plan is to promote sound public policy designed to protect citizens, critical facilities, infrastructure, private property and the environment from natural, technological, and societal hazards. This can be achieved by increasing public awareness, documenting the resources for risk reduction and loss prevention, and identifying activities to guide the district towards building a safer, more sustainable community.

B. Purpose

The Disaster Mitigation Act of 2000 (DMA2000), Section 322 (a-d) requires that local governments, as a condition of receiving federal disaster mitigation funds, have a mitigation plan that describes the process for identifying hazards, risks and vulnerabilities; identifying and prioritizing mitigation actions; encouraging the development of local mitigation activities; and providing technical support for those efforts.

The purpose of this plan is to fulfill Local Hazard Mitigation Plan requirements. The plan will identify hazards, establish community goals and objectives and select mitigation activities that are appropriate for the City of Longview.

C. Goals and Objectives

The plan goals describe the overall direction that the City of Longview can take to work towards mitigating risks from natural, technological and societal hazards. The goals are stepping stones between the broad direction of the mission statement and the specific recommendations outlined in the hazard mitigation initiatives. The goals and objectives help to focus the efforts of the jurisdiction in the mitigation planning effort to achieve an end result that matches the community's unique set of needs, interests and desires.

1. Protect Life

- Improve systems that provide warning and emergency communications
- Develop or amend local codes/ordinances so they effectively address hazard mitigation
- Reduce the impacts of hazards on vulnerable populations
- Strengthen local building code enforcement
- Train emergency responders

2. Protect Property
 - Protect critical assets
 - Protect and preserve facility contents
 - Reduce repetitive losses, including those caused by flooding
3. Promote a Sustainable Economy
 - Form partnerships to leverage and share resources
 - Continue critical business operations
4. Protect the Environment
 - Develop hazard mitigation policies that protect the environment
5. Increase Public Preparedness for Disasters
 - Understand natural, technological and societal hazards and the risk they pose
 - Improve hazard information, including databases and maps
 - Improve public knowledge of hazards and protective measures so individuals appropriately respond during hazard events
 - Develop new policies to enhance hazard mitigation initiatives

D. Scope

1. Jurisdiction

The Cowlitz County Hazard Mitigation Basic Plan includes jurisdiction-specific plans for each of the political subdivisions in Cowlitz County. The scope of this jurisdiction-specific plan is limited to facilities, systems and infrastructure located within the legal geographic boundaries of the City of Longview as well as its water and sewer service areas.

2. Hazards

For purposes of assisting in hazard identification, the City of Longview utilized the following:

- The existing Natural Hazard Mitigation Plan
- Cowlitz County Hazard Identification and Vulnerability Analysis (HIVA)

This information is available in detail in the Cowlitz County Hazard Mitigation Basic Plan.

E. Limitations

1. The development of a Local Hazard Mitigation Plan does not provide a guarantee that the City of Longview can implement any or all of the hazard mitigation initiatives identified. The ability of the City to implement one or more of the hazard mitigation initiatives included in the plan is contingent upon the ability of the City to obtain the resources and/or funding necessary to support the costs of implementing the mitigation project/program.
2. The City of Longview is not limited to implementing only those initiatives identified in the plan. The City has the flexibility to add, delete or modify the hazard mitigation initiatives identified during this initial planning period in order to best meet their needs.
3. Proposed hazard mitigation initiatives were developed utilizing the knowledge and expertise of City of Longview staff members, and based on readily available information. At such time as resources/funding become available to implement a particular hazard mitigation initiative, the City may elect to do additional technical or cost-benefit analysis.

II. Jurisdiction Description

Summary Description

The City of Longview was founded in 1923 along the banks of the Cowlitz and Columbia Rivers. Longview was incorporated in 1924 and a municipal government was established. Longview is located one mile West of Interstate 5, at the confluence of the Cowlitz and Columbia Rivers. Longview is approximately 49 miles north of Portland, 126 miles south of Seattle, and 60 miles east of the Pacific Ocean. Longview is the largest city in Cowlitz County, with a population of approximately 36,100 people residing in 15, 152 households, and covering an area of 14.6 square miles.

The City of Longview is a First Class Code City, operating under the Council/Manager form of government. The City Council meets twice a month and is made up of seven members elected to staggered four-year terms. The city council is responsible for adoption of this plan, while the city manager is responsible for implementation of the plan and the daily operations of the City and its 286 full-time employees and a variety of part-time employees making up another 17 full-time equivalent employees.

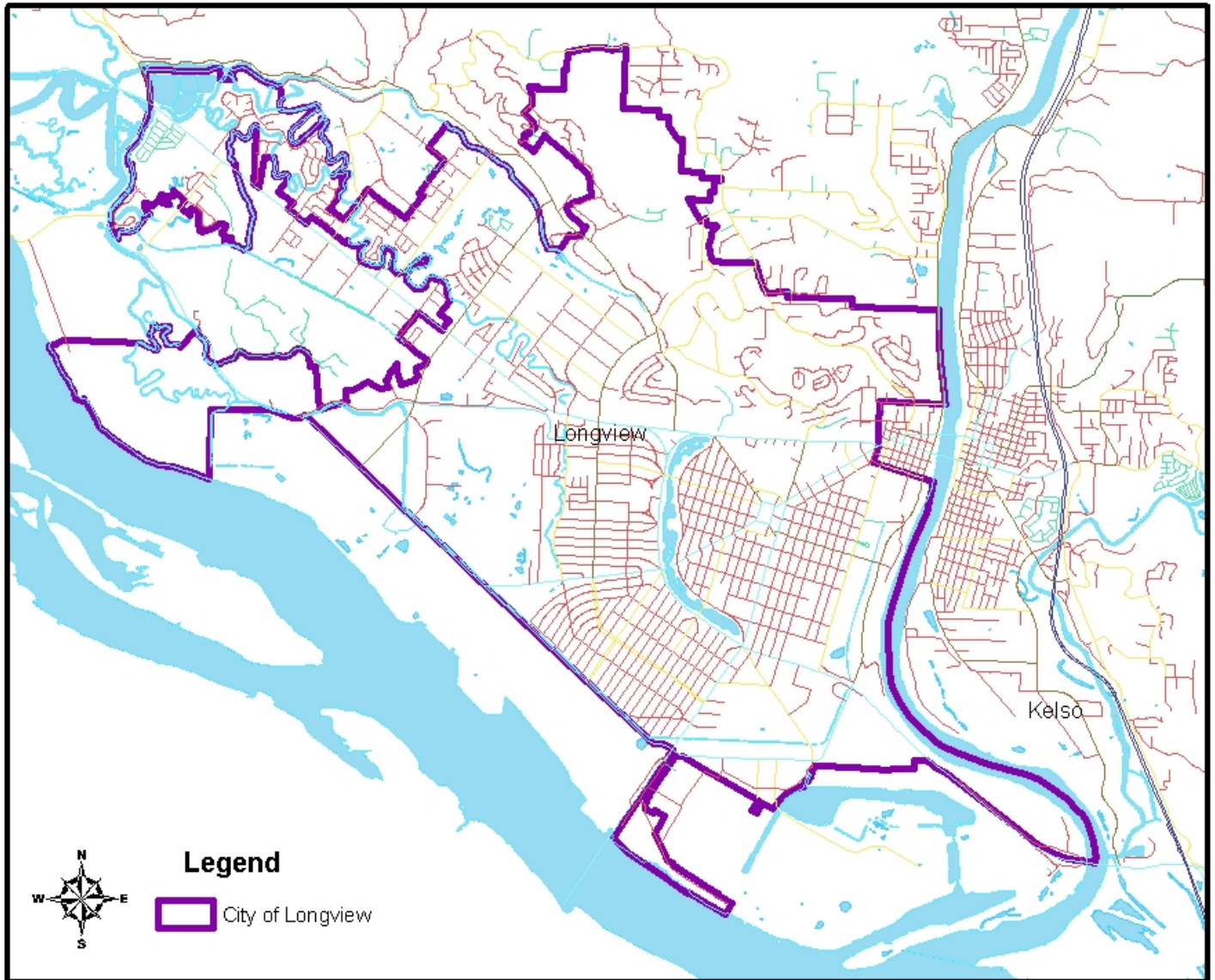
The City provides general governmental services such as police, fire, streets, traffic signals, street lighting, stormwater management, library, prosecution, parks and recreation, community development and building inspections, engineering for public facilities, and various support functions. The City also provides water and sewer services for its residents and businesses and for customers in the urbanized unincorporated area adjacent to the city, providing water service to 12,422 customers inside the city and 1,528 customers outside the city; and providing sewer service to 12,112 customers inside the city and 714 customers outside the city. The City's water service area covers 28.4 square miles and the sewer service area covers 18.9 square miles.

The City's general governmental services are funded primarily by property taxes, business and occupation taxes, and sales taxes, with other revenue coming from permit and user fees, grants, other taxes, and fines. The City's water, sewer, and stormwater utilities are funded by utility user fees. In 2010, the total assessed value of property within Longview as determined by the Cowlitz County Assessor was \$2,736,916,514.

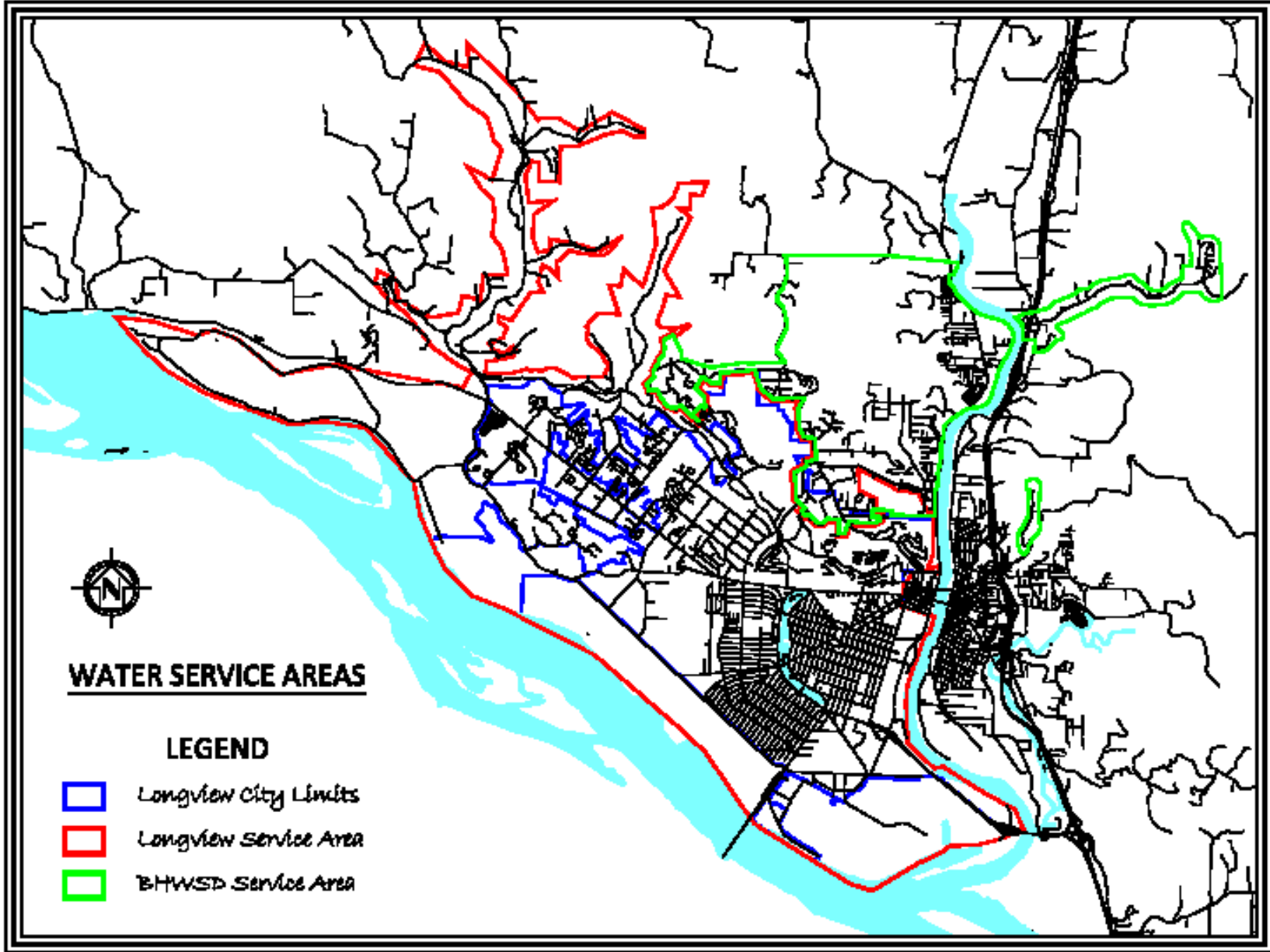
During the past ten years, Longview has experienced an average population growth at a rate of about 0.44% per year, and an average growth in households at a rate of about 0.62% per year. This population growth has come from residents moving into the city and residents annexing into the city from abutting unincorporated urbanized areas. This trend is expected to continue in the foreseeable future which will increase strain on the City's already limited resources. Due to employment losses, the City is developing an industrial park and marketing the city and the industrial park to attract new employers and family-waged jobs. The City is planning for anticipated population growth and demands for services, and is constructing new water and sewer infrastructure to serve new residents and employers while also correcting existing system deficiencies. Longview is also developing comprehensive plans for providing public safety services as the city continues to grow.

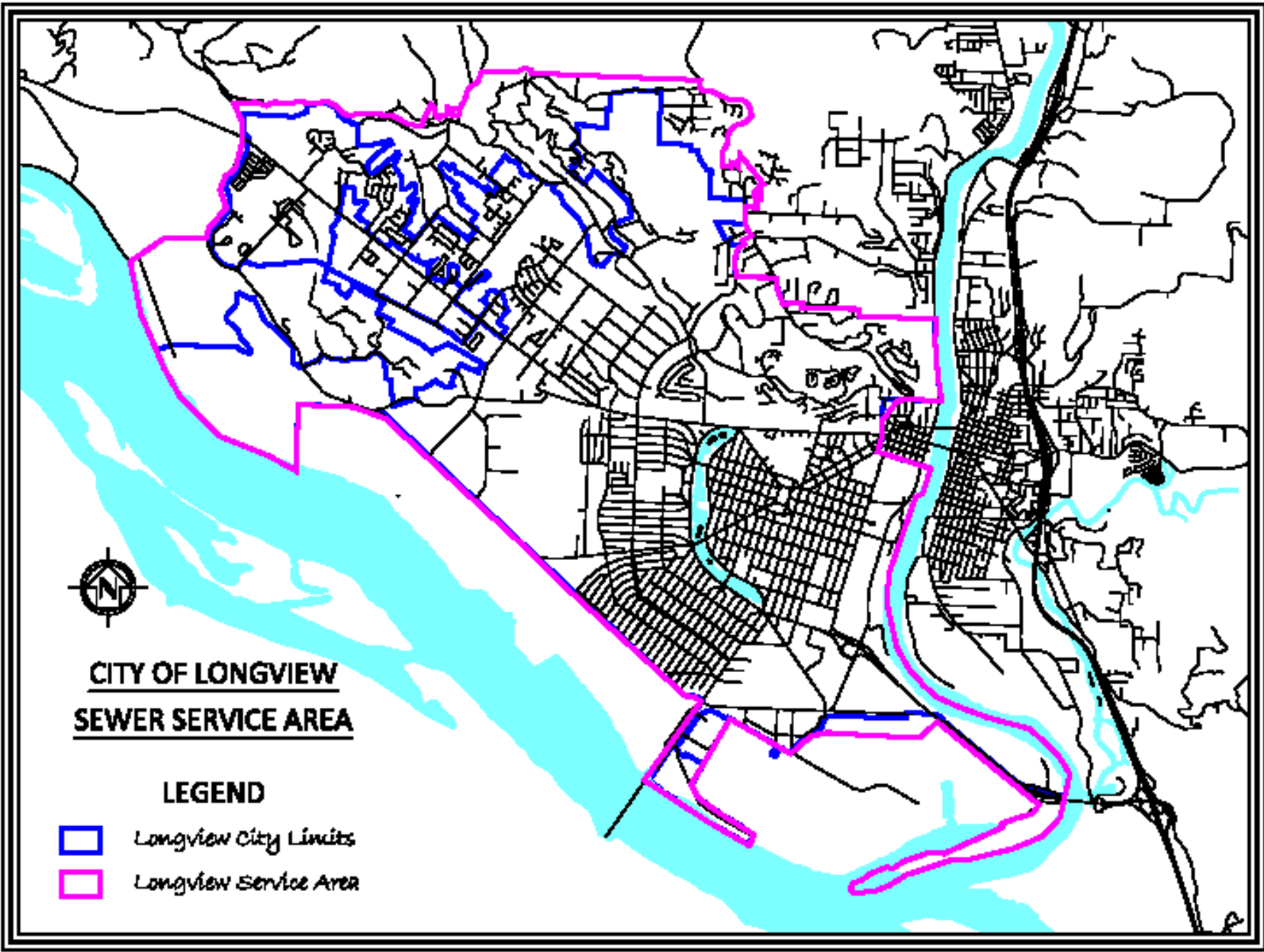
In addition to the county-wide hazard mitigation plan and Longview's annex to the plan, the City prepares for and mitigates hazards by maintaining a robust municipal code addressing zoning, building codes, utility regulations, and other city regulations; has adopted a comprehensive plan for community growth and use or preservation of natural resources and provision of city services; has adopted water, sewer, and drainage master plans; has adopted an emergency response plan and flood plan; and has adopted a water supply emergency response plan and a regional water shortage response plan. Longview has adopted the international building and fires codes, and participates in the National Flood Insurance Program. These planning efforts, as well as maintaining a well-trained staff and variety of public safety and public works response vehicles and equipment, position the City well to respond to natural disasters.

The following maps identify the city of Longview incorporated boundary, and the boundaries of the City's water and sewer utilities.



Longview City Limits



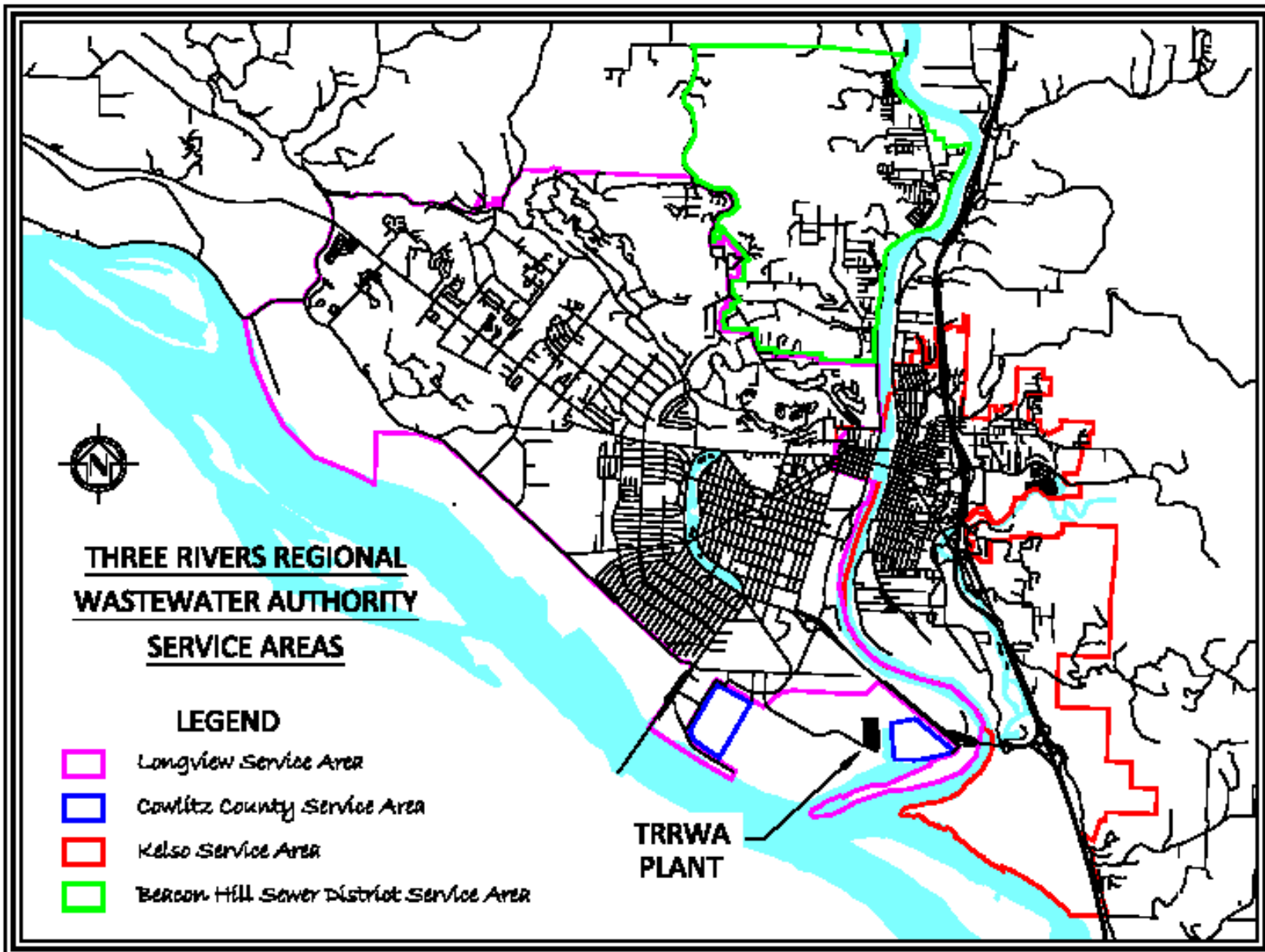


Three Rivers Regional Wastewater Authority

To provide sewer treatment services to its customers, the City of Longview is one of four member entities of the Three Rivers Regional Wastewater Authority (TRRWA). The four members of the TRRWA are the City of Longview, City of Kelso, Beacon Hill Water and Sewer District, and Cowlitz County. The TRRWA was formed in 1972 (originally as the Cowlitz Sewer Operating Board) by interlocal agreement to consolidate and improve sewer treatment services for the member agencies. Because the TRRWA was created by agreement and is not a political subdivision of the state of Washington, it is not eligible for direct FEMA disaster relief and recovery funds. All TRRWA facilities are jointly owned by the four member agencies. Because the city of Longview provides the majority of the flow and funding to the TRRWA, Longview is including the TRRWA under its jurisdiction umbrella.

The City currently operates the West Longview Lagoons Sewer Treatment Plant in west Longview for its customers. However, due to capacity and regulatory issues, the City is constructing facilities to divert all sewage from west Longview to the TRRWA treatment plant, and will abandon the Lagoons facility as a sewer treatment plant. Longview sewage currently is about 60% of the annual flow treated by the TRRWA; after the West Longview Lagoons are abandoned in late 2011, Longview customers will contribute 65% to 70% of the flow treated by the TRRWA. Funding for the TRRWA is provided by annual charges to the member entities based on their proportionate flow to the TRRWA treatment plant. Other miscellaneous charges and fees make up the rest of the TRRWA revenue.

By the end of 2011, the TRRWA will provide sewer service to about 19.4 square miles in the member entities' jurisdictions. The TRRWA operates the regional sewer treatment plant, three major sewer pump stations, and 5 miles of pressure and gravity sewer mains, and has a staff of 23 employees. The following map identifies the sewer service boundaries of the four member entities served by the TRRWA.



Cowlitz Transit Authority

The City also provides public transit services in the Longview/Kelso urban area under contract to the Cowlitz Transit Authority (CTA). The Cowlitz Transit Authority was formed by citizen vote in 1978 to establish a Public Transportation Benefit Area to provide public transit services in the Longview/Kelso area. The CTA contracts with Longview to operate the transit system and to share City facilities and staff for transit purposes. Portions of the City's main operations shop facility are utilized for bus parking and maintenance, transit operations and administration, and paratransit operations. The CTA separately owns a transit center near downtown Longview to serve as the hub of its fixed route bus service.

Regional Water Treatment

As part of its water utility system, the City has partnered with the Beacon Hill Water and Sewer District (BHWSO) to own and operate the Regional Water Treatment Plant on the Cowlitz River. By interlocal agreement, the City operates the water treatment plant, but both entities share ownership of the facilities based on their proportionate use of the water treated at the plant. Currently Longview's ownership share is 85.5% and BHWSO's share is 14.5%. Longview is the lead agency for all operations and capital improvements at the treatment plant, and the City invoices BHWSO for their proportionate share of the costs incurred.

Due to continuing, long-term challenges with Mt. St. Helens volcanic sediment in the Cowlitz River affecting the reliability and capacity of the treatment plant, along with deteriorated structures and equipment and insufficient capacity for growth, the City and BHWSO are constructing a new groundwater supply, treatment plant, and transmission main in west Longview. This new water supply is scheduled to be operational by December 2012, at which time the existing water treatment plant will be abandoned.

Facilities and Infrastructure

The City of Longview owns approximately 674 acres of land (not including public rights of way). These parcels include numerous operations buildings; parks; water and sewer treatment plants; water, sewer, and stormwater pump stations; water reservoirs; and other land and facilities. All City facilities are located in a natural hazard risk zone.

Longview:

Buildings/Facilities

59 Buildings/Facilities – All are in a natural hazard risk zone
Total replacement value estimated at \$41.5 million

Critical Facilities:
(Included Above) City Hall
Fire Station 81
Fire Station 82
Police Station
City Shop
Utilities Operations Center
Parks and Recreation Office/Shop
Mint Valley Golf Maintenance Shop

Total replacement value of critical buildings estimated at \$18.1 million

Water Utility Facilities – All are critical facilities

6 Water Pump Stations

8 Pressure Reducing Stations

12 Water Reservoirs

213 Miles of Water Pipe

Total replacement value estimated at \$48.0 million

Sewer Utility Facilities – All are critical facilities

45 Sewer Pump Stations

152 Miles of Sewer Pipe

West Longview Lagoons Treatment Plant

Total replacement value estimated at \$86.0 million

Stormwater Utility Facilities – All are critical facilities

5 Drainage Pump Stations

30 Miles of Drainage Pipe

Total replacement value estimated at \$10.6 million

Roads – All are critical facilities

178 Miles of Roadway

18 Miles of Improved Alleyway

74 Traffic Signals

2,496 Street Lights

Total replacement value estimated at \$70.0 million

Equipment – All are critical equipment

131 Vehicles

9 Emergency Generators

15 Backhoes, Excavators, Graders

Total replacement value estimated at \$10.7 million.

Three Rivers Regional Wastewater Authority

The TRRWA owns approximately 29.4 acres of property housing the wastewater treatment plant and interceptor pump stations

Buildings/Facilities – All are critical facilities

Wastewater Treatment Plant

Kelso Pump Station

East Industrial Way Pump Station (Main Pump Station)

West Industrial Way Pump Station

Mains and Pipes – All are critical facilities

7.7 Miles of Sewer Main

Equipment – All are critical facilities

19 vehicles/tractors/forklifts/etc.

The replacement value of all TRRWA facilities/equipment is estimated at \$95.7 million.

Regional Water Treatment Plant

Buildings/Facilities/Equipment – All are critical facilities except rental house

Water Treatment Plant

Water Treatment Plant Intake

Rental House

Pickup Truck

The replacement value of all Regional Water Treatment Plant facilities and equipment is estimated at \$49.0 million. The value of the new Mint Farm Regional Water Supply facilities when completed in December 2012 is estimated to be \$38.0 million.

Recent Natural Hazard Event History

Since the last update of the Hazard Mitigation Plan in 2005, Longview has experienced damage from three different Presidentially Declared Disasters, experiencing a total loss estimated at \$615,846, with total eligible loss estimated at \$564,049 (one of the eligible projects has not yet been completed). These disasters were all flooding or winter storm events.

The November Storm of 2006 (DR-1671-WA) caused localized flooding, deposited debris city-wide, deposited a significant volume of sediment in our water treatment plant, damaged our sewer pump station at 38th Ave. at Oak Street, and a landslide destroyed part of a 10-inch water main. This disaster caused an estimated \$437,837 in damage, of which an estimated \$383,925 was eligible for FEMA public assistance funding. The 10-inch water main project is still in progress, working with FEMA on technical and eligibility items. The sediment deposition at the water treatment plant is a repetitive issue caused by sediment from the 1980 Mt. St. Helens volcanic eruption continuing to flush down the Toutle and Cowlitz Rivers. Due to this issue, along with deteriorated facilities and a lack of capacity, the City and BHWSO are constructing a new groundwater supply and treatment system in west Longview to replace the existing surface water treatment plant on the Cowlitz River.

The Winter Storm of 2008/2009 (DR-1825-WA) caused freeze damage to many water system facilities, including a frozen chemical feed line at the water treatment plant, and frozen meters and hydrants. The storm also caused freeze and runoff debris to be deposited city-wide. The total damages from this storm were \$53,756, of which \$50,293 was eligible for FEMA public assistance funding.

The Winter Storm of 2009 (DR-1817-WA) caused flooding and debris to be deposited city-wide, flooding of a water pump station, a significant volume of sediment to be deposited in the water treatment plant, and a landslide broke a water main. The total damages from this storm were \$178,165, of which \$129,831 was eligible for FEMA public assistance funding.

City of Longview Risk Assessment

Introduction

The risk assessment provides information about the hazards that threaten the City of Longview. This information provides the factual basis to identify and support a strategy that can effectively mitigate the effects of the hazards that threaten this jurisdiction's safety and challenge its ability to perform essential functions.

The content and structure of this plan’s risk assessment was developed using the Federal Emergency Management Agency’s (FEMA) 2008 “Local Multi-Hazard Mitigation Planning Guidance.” The table below shows the Disaster Mitigation Act (DMA) Risk Assessment Planning Requirements that must be met in order for this plan to receive a “satisfactory” score. Each of these planning requirements is met through the information contained in both the regional risk assessment and in this local annex.

Disaster Mitigation Act Risk Assessment Planning Requirements

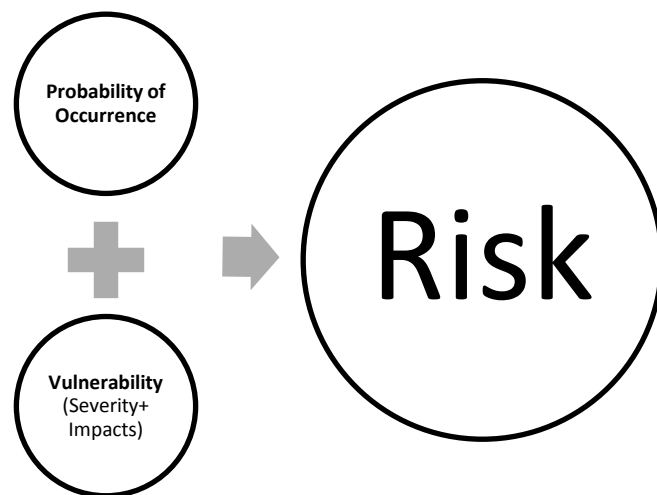
DMA Section	Requirement
§201.6(c)(2)(i):	[The risk assessment shall include a] description of the type ... of all natural hazards that can affect the jurisdiction ...
§201.6(c)(2)(i):	[The risk assessment shall include a] description of the ... location and extent of all natural hazards that can affect the jurisdiction. The plan shall include information on previous occurrences of hazard events and on the probability of future hazard events.
§201.6(c)(2)(ii):	[The risk assessment shall include a] description of the jurisdiction’s vulnerability to the hazards described in paragraph (c)(2)(i) of this section. This description shall include an overall summary of each hazard and its impact on the community.
§201.6(c)(2)(ii):	[The risk assessment in all] plans approved after October 1, 2008 must also address National Flood Insurance Program (NFIP) insured structures that have been repetitively damaged by floods.
§201.6(c)(2)(ii)(A):	The plan should describe vulnerability in terms of the types and numbers of existing and future buildings, infrastructure, and critical facilities located in the identified hazard areas ...
§201.6(c)(2)(ii)(B):	[The plan should describe vulnerability in terms of an] estimate of the potential dollar losses to vulnerable structures identified in paragraph (c)(2)(ii)(A) of this section and a description of the methodology used to prepare the estimate ...
§201.6(c)(2)(ii)(C):	[The plan should describe vulnerability in terms of] providing a general description of land uses and development trends within the community so that mitigation options can be considered in future land use decisions.
§201.6(c)(2)(iii):	For multi-jurisdictional plans, the risk assessment must assess each jurisdiction’s risks where they vary from the risks facing the entire planning area.

In general, the Federal DMA planning requirements with the words “**shall**” and “**must**” indicate that the item is mandatory and must be included in the plan, otherwise it will not be approved by FEMA. Regulations with the word “**should**” indicate that the item is strongly recommended to be included in the plan, but its absence will not cause FEMA to disapprove the plan.

Hazard Analysis Definitions

The adjective descriptors (High, Moderate, and Low) for each hazard's probability of occurrence, vulnerability, and risk rating are consistent with the terms used in the regional assessment.

The following terms are used in this plan to analyze and summarize the risk of the hazards that threaten this jurisdiction:



Risk Rating:

An adjective description (High, Moderate, or Low) of the overall threat posed by a hazard is assessed for the next 25 years. Risk is the subjective estimate of the combination of any given hazard's probability of occurrence and vulnerability.

- High: There is strong potential for a disaster of major proportions during the next 25 years; or History suggests the occurrence of multiple disasters of moderate proportions during the next 25 years.
- Moderate: There is medium potential for a disaster of less than major proportions during the next 25 years.
- Low: There is little potential for a disaster during the next 25 years.

Probability of Occurrence:

An adjective description (High, Medium, or Low) of the probability of a hazard impacting the jurisdiction within the next 25 years.

- High: There is great likelihood that a hazardous event will occur within the next 25 years.
- Moderate: There is medium likelihood that a hazardous event will occur within the next 25 years.
- Low: There is little likelihood that a hazardous event will occur within the next 25 years.

Vulnerability:

Vulnerability can be expressed as combination of the severity of a natural hazard's effect and its consequential impacts to the community. An adjective description (High, Medium, or Low) of the potential impact a hazard could have on the community. It considers the population, property, commerce, infrastructure and services at risk relative to the entire jurisdiction.

- High: The total population, property, commerce, infrastructure and services of the community are uniformly exposed to the effects of a hazard of potentially great magnitude. In a worse case scenario, there could be a disaster of major to catastrophic proportions.
- Moderate: The total population, property, commerce, infrastructure, and services of the community are exposed to the effects of a hazard of moderate influence; or the total population, property, commerce, infrastructure, and services of the community are exposed to the effects of a hazard of moderate influence, but not all to the same degree; or an important segment of population, property, commerce, infrastructure and services of the community are exposed to the effects of a hazard. In a worst case scenario there could be a disaster of moderate to major, though not catastrophic, proportions.
- Low: A limited area or segment of population, property, commerce, infrastructure, or service is exposed to the effects of a hazard. In a worst case scenario, there could be a disaster of minor to moderate proportions.

Summary Risk Assessment

Based on the regional risk assessment and the local risk assessment in the subsequent section, the following hazards pose the greatest threat to Longview.

Hazard	Probability of Occurrence	Vulnerability	Risk
Earthquake	Moderate	High	Moderate
Storm	High	High	High
Flood	Moderate	High	Moderate
Landslide	Moderate	Moderate	Moderate
Wildland Fire	Low	Moderate	Low
Volcanic Event	Low	Low	Low

Local Risk Assessment

A comprehensive risk assessment of the major natural hazards that threaten Longview was developed for this plan through the regional risk assessment process described in Chapter 4.0. The regional risk assessment and its hazard profiles serve as the foundation for this jurisdiction's risk assessment. A list of all of the potential natural hazards that could impact this jurisdiction is located in Chapter 4. Chapter 4 includes six natural hazard profiles for earthquake, storm, flood, landslide, wildland fire, and volcanic events. Each profile defines the hazard and describes its effects, severity, impacts, probability of occurrence, and historical occurrences. The regional profiles describe this jurisdiction's local vulnerabilities in terms of the portion of the jurisdiction's land base or service area, population, employment, dwelling units, jurisdiction-owned assets, and critical facilities that are within each hazard zone.

This section of the plan provides additional details or explains differences where this jurisdiction's risks for each hazard vary from the risks facing the entire planning area. Maps of the hazards that affect Longview are scaled to local boundaries and are included in this section.

Earthquake

Severity

There are several common measures of earthquakes. The Richter Magnitude Scale (used in this hazard profile) is a mathematical scale which measures the intensity of ground motion. Because of the logarithmic basis of the scale, each whole number increase in magnitude represents a ten-fold increase in measured amplitude, and 31 times more energy released. The Modified Mercalli Intensity Scale measures the earthquake intensity by the damage it causes. Peak ground acceleration (PGA) is a measure of the strength of ground movements. It expresses an earthquake's severity by comparing its acceleration to the normal acceleration due to gravity.

The severity of an earthquake is also dependent upon the source of the quake. The severity of the vibration increases with the amount of energy released and decreases with distance from the causative fault or epicenter. Three kinds of earthquakes are recognized in the Pacific Northwest: crustal earthquakes, subduction zone earthquakes, and deep earthquakes

1. Crustal (shallow) earthquakes occur along faults close to the surface of the North American plate. They have a maximum depth of about 19 miles, though most occur much closer to the surface. The majority

of earthquakes in the Pacific Northwest are of the shallow type. They could potentially produce magnitudes as high as 7.5, though most are less than 3.0. Scientists are locating and studying active faults that are located within the Puget Sound lowlands. The Seattle fault is perhaps the most infamous as it lies under the most densely populated area of the state. A magnitude 6.0 or greater earthquake originating from a surface fault could render incredible destruction. More research is necessary to verify the existence of the Olympia fault structure and its probability of rupturing.

2. Subduction zone or interplate earthquakes emanate from the boundary where the Juan de Fuca plate subducts eastward into the North American Plate. The width of the Cascadia Subduction Zone fault varies along its length, depending on the temperature of the subducted oceanic slab, which heats up as it is pushed deeper beneath the continent. As it becomes hotter and more molten it eventually loses the ability to store mechanical stress and generate earthquakes. An earthquake from this zone would be considered “the Big One,” as it could travel over hundreds of miles and last for several minutes. Subduction zone earthquakes are considered to be the most destructive with potential magnitudes of 9.0 or greater. The last subduction zone earthquake is believed to have occurred in 1700.
3. Deep earthquakes occur along faults in the Juan de Fuca plate as it sinks beneath the North American plate. These earthquakes are located under the North American Plate; therefore their energy translation to the surface is buffered by their depth. Their depths generally range from 16-62 miles. Magnitudes of 7.5 have been recorded. The 1949, 1965, and 2001 earthquakes all emanated from this zone. The 2001 Nisqually earthquake's focus was located about 32 miles deep below its epicenter on Anderson Island.

Impacts

The impact from earthquakes to communities is well evidenced by the catastrophic events in San Francisco and Los Angeles in the United States; Kobe, Japan; Chengdu, China; and Kashmir, Pakistan. Failed buildings, bridges, and other structures can trap or bury people causing injury and death. Damage to infrastructure such as roads, bridges, rail lines, runways, and almost all types of utilities is certain. Infrastructural failures can result in loss of public and private sector services and business. Communities are likely to face communication, electricity, motor fuel, and natural gas disruptions. Structural fires are a secondary hazard from earthquake destruction. Individuals and households may be displaced due to damaged homes. A subsequent economic downturn would likely result from major transportation disruptions and loss of revenue from suspended business and services.

In the Longview, older unreinforced masonry structures such as buildings, walls, chimneys, and facades are vulnerable to crumbling from ground shaking. Areas with soft soils, such as downtown Longview and adjacent neighborhoods have experienced these types of destruction during the 1949 and 1965 earthquakes; the 2001 earthquake resulted in minimal local damage.

Fire fighters, police, public works, and other safety and emergency personnel can quickly become over extended with response and recovery operations. Transportation disruptions will hinder emergency response to remote or hard to reach areas. Building and structural inspections will become priorities for public works and development services personnel and disrupt other operations.

Probability of Occurrence

Earthquakes are certain to impact the Region in the future. The following probabilities of occurrence for the three earthquake sources are offered by the Washington State Hazard Mitigation Plan:

- Crustal Earthquake - A magnitude 6.5 or greater earthquake is estimated to occur once about every 333

years in the Puget Sound Lowlands

- Subduction Zone Earthquake - A magnitude 9.0 earthquake is estimated to recur every 350 to 500 years.
- Deep Earthquakes - Five magnitude 6 or greater earthquakes have occurred in the Puget Sound basin since 1900. Since 2001, the Cowlitz region has been rocked by three deep earthquakes; spaced 16 and 36 years apart since 1949 and 1965 respectively (about every 26 years). It is estimated that a magnitude 7.1 earthquake (1949 type event) will occur every 110 years.

Regardless the source of earthquake, past events suggest that a destructive event reoccurs about every 26 years. Therefore, the overall probability of occurrence of a damaging earthquake is moderate.

Historical Occurrences and Impacts Specific to this Jurisdiction

February 28, 2001, Federal Disaster 1361: Nisqually Earthquake

At 10:54 a.m. a magnitude 6.8 earthquake produced strong ground shaking across Washington State. The epicenter was located near Anderson Island, approximately 11 miles north of Olympia near the Nisqually River Delta. The focus was located nearly 32 miles underground. The depth of the earthquake minimized the intensity of the shaking and limited the impact to the built environment. In addition, drought conditions in Washington reduced the number of landslides and amount of liquefaction that would have otherwise been caused by a quake of that magnitude with saturated soils. Nevertheless, the observations of geotechnical engineers indicate that liquefaction was widespread in parts of the Puget Sound. Several significant lateral spreads, embankment slides, and landslides also occurred. The relatively long duration of the event and the relatively low cyclic resistances of some of the fills in the area are likely causes for the significant liquefaction and ground failure which occurred.

Cowlitz County was among the counties issued for emergency relief in the State. A federal disaster declaration was issued only one day after the event. Statewide, the Nisqually earthquake resulted in 700 injuries (a dozen of them serious) and one confirmed death (a trauma induced heart attack). Federal Emergency Management Agency (FEMA) reported that 41,414 people registered for federal disaster aid, more than three times the number of a previous disaster in Washington.

One year after the earthquake, news reports put reported property damage at approximately \$500 million. However, when factoring in unreported damage, actual losses may run significantly higher. A University of Washington study of damage to households only, estimates that the earthquake caused \$1.5 billion in damage to nearly 300,000 residences.¹ This estimate does not include public and business sector losses. Other estimates of the combined losses to public, business, and household property have ranged from \$2 billion to \$4 billion. Most buildings performed well from a life-safety standpoint, in that the limited structural damage that occurred caused no loss of life or collapse. However, the economic cost of nonstructural damage, i.e., damage to nonessential building elements, such as architectural features, ceiling failures, shifting of equipment, fallen furniture/shelving, desktop computer damage, fallen light fixtures, and losses due to lost productivity, was high. In general, new buildings and buildings that had recently been seismically upgraded typically displayed good structural performance, but many still sustained non-structural damage. This earthquake caused minimal local damage.

April 29, 1965, Federal Disaster 196: Seattle Tacoma Earthquake

A magnitude 6.5 earthquake struck the Puget Sound Region at 7:28 a.m. The epicenter was located about 12 miles north of Tacoma at a depth of about 40 miles. Damage from the 1965 quake killed seven people and damage was estimated to be \$12.5 million; with much of the loss in King County. In Olympia, the Union Pacific Railroad reported a hillside slid away from beneath a 400 foot section of a branch line just outside Olympia. Damage to the legislative building forced the closure of the legislative session. Governor Dan Evans

closed the Capitol Campus and state government operations came to a standstill except for retention of key personnel and critical services.

April 13, 1949, Olympia Earthquake

A magnitude 7.1 earthquake rattled the region at 11:55 a.m. The epicenter was located about eight miles north-northeast of Olympia. Property damage likely exceeded \$25 million (1949 dollars). One student was killed by falling bricks at Castle Rock High School. An unanchored gable collapsed above the main entrance way, causing this tragedy. Streets were damaged extensively and water and gas mains were broken.

Summary Assessment

History suggests a moderate probability of occurrence of another damaging earthquake sometime in the next 25 years. With the 2001 Nisqually earthquake still fresh in the region's memory, it is important to note that it was not the largest earthquake event possible in the region. It is conceivable that a similar magnitude earthquake could emanate from a shallow crustal fault which would result in much greater damages. Damage from the 1949, 1965, and 2001 earthquakes indicate that an earthquake of a greater magnitude would have a catastrophic impact on Longview. Considering that a large population lives and works in higher risk earthquake hazard areas, the entire region has a high vulnerability rating. Accordingly, a moderate risk rating is assigned.

Summary Risk Assessment for Earthquake in Longview

Probability of Occurrence	Vulnerability	Risk
Moderate	High	Moderate

Storm

Severity

The coastal mountains afford Longview some protection from severe southerly and westerly winds. The coastal mountain range acts as a buffer and shields the region from extreme winds in excess of 80 mph. Longview does not encounter the 100 mph or greater winds that sometimes wreak havoc on Washington's Pacific coast communities. Nevertheless, the entire region is directly or indirectly susceptible to the effects of high winds. Neighborhoods with stands of tall conifer trees are the most vulnerable to property damage. All communities can suffer power outages and be left in the cold and dark for extended periods.

Impacts

The city of Longview, like most of western Washington, is vulnerable to high winds because of the climatic conditions and the prevalence of 100 to 150 foot tall conifer trees. High winds weaken standing trees and structures that are weighted with snow or ice. Douglas fir and western hemlock tree species have shallow lateral root systems with top heavy crowns and entire trees are vulnerable to falling when soils are soaked from previous rainfall. Regular autumn rains saturate soils and decrease tree roots' ability to adhere to soil. Sustained high winds and gusts cause trees to sway significantly. Repetitive swaying motion can eventually weaken a tree's root hold in the saturated ground and force it to topple. These tall columnar trees and their massive branches act like giant hammers and sever electrical transmission lines, crush vehicles, damage homes and buildings, and block transportation routes. Falling tree limbs and other flying debris can injure or cause the death of people and animals. Downed power lines have caused electrocutions elsewhere in the greater Puget Sound Region.

Widespread power outages can take several days to restore. The total mass of downed debris on the transportation network impedes the response capabilities of emergency personnel and utility crews. Electrical blackouts force the closure of government offices, businesses and schools. Power outages can disrupt traffic operations due to debris road blocks, unpowered traffic signals and traffic snarls resulting in thousands of motorists seeking few available alternate routes on local arterials and collectors. When power outages occur simultaneously with heavy stormwater flows, public works crews may struggle to provide auxiliary power to sewer lift stations to prevent backups or flooding in suburban and urbanized areas.

People without power may lack backup home heating systems and may suffer from hypothermia if temperatures persist below freezing levels. Out of desperation, some people may resort to heating their homes with BBQ grills unaware of the risks of carbon monoxide poisoning. The risk of home fires increases county-wide as people use candles to light their homes or start wood fires in stoves or fireplaces that are structurally faulty or have excessively dirty or blocked chimneys. Individuals with home powered life support systems, such as oxygen respirators or suction equipment, may be at risk of health complications if backup power systems are not available. Low income populations are particularly impacted by loss of food due to spoilage from lack of refrigeration.

Between 1960 and 2007, 79 windstorms have occurred in western Washington that caused at least \$50,000 or more in damage area wide. The combined damages from these wind storms are estimated to have cost the region in excess of \$27 million dollars (adjusted to 2007 dollar value).ⁱⁱ

Probability of Occurrence

The Washington State Natural Hazard Mitigation Plan identified Cowlitz County and 22 other counties as susceptible to high winds. Counties that were considered most vulnerable to high winds are those with an annual high wind recurrence rate of 100%. The state plan indicated that Longview's annual high wind recurrence rate is 175%. At least 18 notable Pacific Northwest cyclones have impacted the region in the last 25 years, thus probability of occurrence is high.

Historical Occurrences and Impacts Specific to this Jurisdiction

Several notable storms have impacted the region over the last few decades. It is important to highlight the effects and damages of these storms to emphasize the severity, cost, and vulnerabilities associated with these events. Estimates of potential dollar losses for future storm events were not calculated as part of the storm hazard risk assessment. Previous storm events perhaps offer the best indication of the types of future losses that local communities are likely to experience with future storms.

January 6-16, 2009, Federal Disaster 1817: Severe Winter Stormⁱⁱⁱ

On January 21, 2009, Governor Christine O. Gregoire requested a major disaster declaration as a result of a severe winter storm that yielded widespread and damaging effects from flooding, mudslides, landslides, avalanches, high winds, and freezing rain, during the period of January 6-16, 2009. The Governor requested a declaration for Individual Assistance for nine counties and Hazard Mitigation for all counties. During the period of January 13-16, 2009, joint federal, state, and local Individual Assistance Preliminary Damage Assessments (PDAs) were conducted in the requested counties and are summarized below. PDAs estimate damages immediately after an event and are considered, along with several other factors, in determining whether a disaster is of such severity and magnitude that effective response is beyond the capabilities of the state and the affected local governments, and that federal assistance is necessary.^{iv} Longview received \$129,831 in disaster relief funding for this event.

December 12-27, 2008, Federal Disaster 1825: Severe Winter Storm^v

Near record snowfalls, freezing rain, and rain combined with sustained subfreezing temperatures froze the region for a period of nearly two weeks making it one of the worst snow-laden winter storms in decades. Successive snowfall over the first week resulted in 18 to 20 inch depths in the Lacey, Olympia, and Tumwater area. Depths of 36 inches were reported by some county residents at higher elevations inside and outside of city limits. Governor Gregoire declared a state of emergency on December 24. On March 2, a Presidential Disaster Declaration was declared for 27 counties, including Cowlitz County. Longview received \$50,293 in disaster relief funding for this event.

November 2-11, 2006 Federal Disaster 1671: Severe Winter Storm, Flooding, Landslides, and Mudslides

On November 6, 3.4 inches of rain fell; a 24 hour rainfall record for that day of the year. The heavy rains caused flooding of urban roads and streets throughout the region, and landslides that damaged public and private property. Longview is estimated to receive \$383,925 in disaster relief funding; one of the damage repair projects has not yet been completed.

December/January 1996/1997 Federal Disaster 1159, Ice, Wind, Snow, Landslides, and Flooding

Snow, ice, and freezing rain crippled Cowlitz County on December 26. This storm produced the worst freezing rain event to hit the region in decades. Sub-freezing temperatures and power outages persisted for over a week into early January.

December 12, 1995 Windstorm Federal Disaster 1079

A windstorm caused widespread destruction from northern California to British Columbia. Wind gusts of 57 mph rattled the region causing widespread power outages to nearly 45,000 households and businesses. Road closures from fallen trees and limbs forced the closure of many local and state government offices and area businesses. One Mason County woman was killed when a power transformer exploded near her home setting her residence on fire. First responders could not reach her home due to blocked roads.

February 1 to 8, 1989, Snow Storm

Arctic air pushed southward across Oregon between the 1st and the 3rd of the month. Heavy snow fell over all of Oregon. Some coastal areas had 6 to 12 inches of snow, an event of which is almost unheard. Salem reported 9 inches of snow and over a foot settled over the state. Numerous record temperatures were set. Strong winds produced wind chill temperatures of between 30 and 60 degrees below zero. There were extensive power failures as well as considerable home and business damage throughout the state resulting from frozen plumbing. Damage estimates exceeded well over a million dollars. Several moored boats sank on the Columbia River because of ice accumulation. There were five weather-related deaths, three in auto accidents caused by ice and snow and two in which people had frozen to death.

November 13-15, 1981

The strongest wind storm since the infamous Columbus Day storm of 1962 struck the Pacific Northwest with a one-two punch combination. The first punch was delivered Friday, November 13, and early Saturday, November 14, when an intense low-pressure area tracked northward 150 to 200 miles west of the Oregon coast. The central pressure of the low was 958 millibars (mb), 2 mb lower than the 1962 storm, but the storm track was about 90 miles farther west of the 1962 storm track. The second punch was delivered on Sunday, November 15, when a second somewhat weaker low pressure area followed a track similar to the first storm causing strong winds over the area again. These winds occurred as people were still recovering from the effects of the first storm.

Strong winds spread into the Pacific Northwest from the south the evening of Friday, November 13. Winds spread into Washington during the morning of November 14. Hoquiam reported wind gusts to 70 mph, Seattle to 67 mph and Olympia to 64 mph. Strong winds also spread as far east as Boise and Reno, where gusts to near 100 mph were reported.

The second storm spread winds near 60 mph along the Oregon coast beginning Saturday morning, November 15. Portland recorded wind gusts to 57 mph, Boeing Field near Seattle had wind gusts to 48 mph, SEA-TAC airport had gusts to 51 mph and Olympia airport had wind gusts to 58 mph.

The November 13-14 storm did the most damage. However, the one-two punch of the two storms resulted in more damage from the weaker, second storm than normally would have been expected. Eleven people were killed and \$50 million in damage were reported as a result of the two wind storms. This compares to 38 fatalities and damage in excess of \$200 million for the 1962 Columbus Day storm.

Numerous injuries resulted from wind-blown debris in western Washington and Oregon. Damage was widespread, including hundreds of downed trees and power lines across the Pacific Northwest. Roof damage was common. For example, on November 14, winds ripped off the 2,500 square feet roof of the Homestead Restaurant in North Bend, Oregon. Downed power lines caused massive power outages. Estimates indicated that nearly 500,000 homes were without power for at least a short time during the weekend. Damage to standing timber was extensive from Washington to northern California.

Many airports across Oregon and Washington suffered damage. At the Hillsboro airport, one airplane was flipped upside down and several hangars were damaged. Three light planes at Salem's McNary Field were damaged by winds that flipped them on their backs Friday night. While damage was extensive throughout western Oregon and Washington as a result of the strong winds, it was still considerably less than that resulting from the 1962 Columbus Day storm.

October 12, 1962 - The Columbus Day Wind Storm. A generation of Washingtonians received searing memories that day. This quintessential windstorm became the standard against which all other statewide disasters are now measured. The storm killed 38 people and injured many more and did more than 200 million dollars in damage (over 800 million in today's dollars). Wind gusts reached 116 mph in downtown Portland. Cities lost power for two to three weeks and over 50,000 dwellings were damaged. Agriculture took a devastating blow as entire fruit and nut orchards were destroyed. Scores of livestock were killed as barns collapsed or trees were blown over on the animals.

- Strongest widespread non-hurricane wind storm to strike the continental U.S. this century
- Struck from northern California to British Columbia
- Claimed 46 lives, blew down 15 billion, yes, 15 billion board feet of timber (\$750 million worth - 1962)
- Total property damage in the region \$235 million
- Recorded wind speeds (before power went out) Naselle - Gust to 150 MPH Bellingham and Vancouver - Gust 92 MPH

Summary Assessment

The probability of each storm element's occurrence varies, but winter storms frequently pack several hazardous elements across a period of consecutive days or weeks, therefore the overall probability of winter storm occurrence is high. The overall impacts described in both the hazard profile and the brief record of historical occurrences demonstrates that the region's vulnerability is also high. Therefore, the overall risk rating for severe winter storms is high.

Thunderstorms do occur in the Longview area, thus the probability of occurrence of the storm elements is high. Thunderstorms produce a combination of wide-spread elements that cause destruction beyond isolated areas. Therefore, the overall probability of occurrence, the vulnerability rating and the overall risk for thunderstorms are all high.

Summary Risk Assessment for Storm in Longview

Probability of Occurrence	Vulnerability	Risk
High	High	High

Flood

The Cowlitz River

Cowlitz River, with a drainage area of 2,180 square miles at its mouth, flows into Columbia River at river mile 68.0. Principal tributaries that flow into Cowlitz River within the study reach are Toutle River at mile 20.0, and Coweeman River at 1.3. At Cowlitz-Lewis county line, upper limit of the study reach, the drainage area is 1,700 square miles. About 70% of Cowlitz River basin area is in Cowlitz County. The Cowlitz, Toutle, and Coweeman rivers all have their headwaters in the Cascade Range. The Toutle and Coweeman rivers have drainage areas of 512 and 127 square miles, respectively.

The main axis of the 1,700-square-mile area above the study reach lies east and west; the area is trapezoidal in shape, 65 miles long, 10 miles wide at the lower end, and 27 miles wide at the upper end. Of the total drainage area, approximately 75% is mountainous terrain. The remainder of the area is bottom land and rolling foothills. Large areas of the bottom land are being used for agricultural purposes.

The topography of the watershed is rugged and timber covered. The highest point in the basin is Mount Rainier, elevation 14,408 feet. The average elevation of the basin is approximately 3,400 feet, and the lowest elevation is less than 50 feet.

The fall in the Cowlitz River from mile 134.0 to the mouth is 1,340 feet. This is an average gradient of 10-feet per mile, but the actual gradient varies from several hundred feet per mile in

the upper reach to less than 2-feet per mile in the lower reach. In the 26.1-mile reach investigated in Cowlitz County, the fall is 60-feet for an average gradient of 2-3 feet per mile.

The two significant tributaries to Cowlitz River within Cowlitz County are the Coweeman and Toutle rivers. The Cowlitz River valley in Cowlitz County has an average width of about 3 miles and is widest between Castle Rock and the Kelso-Longview area. After 1968, flooding has been infrequent along lower Cowlitz River below Mayfield Dam because floods the magnitude of flood stage or lesser magnitude, will be regulated to bankfull stage at Castle Rock.

Besides the industrial, commercial and business enterprises in the three largest urban centers, the remaining valley area is primarily agricultural. Most of the bottom land area is cropland, consisting largely of grain and forage for livestock, with small acreages of sweet corn and other more intensively cultivated crops. About 10% of the cropland is irrigated.

The main line of Great Northern-Northern Pacific and Union Pacific Railroad from Seattle to Portland traverses the entire length of the valley. The Columbia and Cowlitz Railroad, a logging railroad, connects the Kelso-Longview area to the foothills at the confluence of North and South Fork Toutle Rivers. It crosses the Cowlitz River at mile 7.1.

Interstate 5 parallels the valley to the east. State Highway 411 provides access along the valley to the west. Secondary roads make up the balance of the transportation network. Five highway and three railroad bridges cross the Cowlitz River in the lower 27 miles. The bridges do not seriously obstruct streamflow. Head losses at each bridge during major floods are less than 1 foot.

Drainage Areas in Watershed of Cowlitz River			
Stream	Location	Mile Above River	Drainage Area sq. mi.
Cowlitz River	Mouth	0.0	2,480
	At Kelso	5.0	2,350
Coweeman River	Mouth		127

The Columbia River

The Columbia River at mile 52.0 (near Longview) drains an area of approximately 256,000 square miles on the west slope of the Continental Divide in the northwestern part of the United States and southwestern Canada. Major parts of the states of Washington, Idaho, and Oregon, and small parts of Montana, Wyoming, Utah, and Nevada, in addition to southeastern British Columbia, are within the Columbia River drainage basin. The area above the upstream limit of the study reach, mile 87.0, is approximately 251,000 square miles. The basin terrain varies from flat or gently rolling farmland to high, rugged, wooded mountains. A large portion of the area is devoted to agricultural or related uses. The watershed boundaries throughout the basin are a series of rugged mountains. The highest elevation in the basin is 13,766 feet and the average elevation of the basin is approximately 1,200 feet. The total fall in Columbia River from the Canadian border (mile 750) to the mouth is 1,300 feet, or an average fall of 1.75 feet per mile. In the 35-mile study reach, Columbia River has an average fall of 0.3 foot per mile at flood stage. At low water, tides reverse the slope of the river during a 2-hour period.

The most significant tributaries of Columbia River within the study reach in a downstream order are Lewis, Kalama, and Cowlitz rivers. Pertinent drainage areas in the study reach are shown in the table on the following page.

Columbia River flow is affected materially by upstream existing storage projects located on Columbia River and its tributaries. Additional control will be provided on completion of all storage projects presently under construction. Further protection is provided by numerous bank protection and levee projects in the Longview-Kelso area, including the lower reaches of the Cowlitz River affected by Columbia River backwater, and other susceptible flooding areas. Some of the levees were constructed entirely by local interests. Others were either constructed or improved with Federal funds in cooperation with local interests.

River forecasts are issued daily year round for the Columbia River at Vancouver, Washington. Forecasts, especially during high water, are given widespread dissemination by the local press, radio, and television stations.

The flood elevation can be determined from the profile for any location along the river. Major urban developments directly affected by the Columbia River in Cowlitz County are the cities of Longview and Kelso. Besides a few scattered developments elsewhere and the city and port of Kalama, most of the remaining flood plain is agricultural land.

Great Northern-Northern Pacific and Union Pacific railroads and Interstate Highway No. 5 lie within or adjacent to the flood plain from the upstream limit of the study reach to mile 68 at the Kelso-Longview area.

Drainage Areas in Watershed of Columbia River			
Stream	Location	Mile Above River	Drainage Area sq. mi.
Columbia River	Mouth	0.0	259,000
	Lower limit of study area	52.0	256,000
	Above Cowlitz River	68.0	253,500
	Upper limit of study area	87.0	251,000
	Vancouver	106.5	241,000
Lewis River	Mouth	0.0	1,000 (<i>approx.</i>)
Cowlitz River	Mouth	0.0	200 (<i>approx.</i>)
Kalama River	Mouth	0.0	2,500 (<i>approx.</i>)

Severity

Many factors influence the severity of riverine flooding such as the pre-existing condition of the ground (saturated from previous rain, covered with snow, or frozen), the topography and size of the watershed, freezing level, and the influence of human activity on the landscape (development and logging practices).

Cowlitz County has three levels of flood severity:

1. **Minor flooding:** A river exceeds bank-full conditions at one or more locations, generally flooding fields and forests. Some roads may be covered but passable. There may be enhanced erosion of some river banks.
2. **Moderate flooding:** Individual residential structures are threatened and evacuation is recommended for selected properties. Some roads may be closed. Moderate damage may be experienced.
3. **Major flooding:** Neighborhoods and communities are threatened and evacuation is recommended for residents living on specified streets, in specified communities or neighborhoods, or along specified stretches of river. Major thoroughfares may be closed and major damage is expected.

The following table displays the severity of flood in Cowlitz County as compared to the 39 Washington State counties. This table utilizes multiple qualitative data sets to determine that Cowlitz County is the 8th most susceptible county in the state, for flooding.

Jurisdictions Most Vulnerable to Flood							
County	Approx. Frequency of Occurrence	% Area in Flood Plain	# Flood Insurance Policies	# Flood Insurance Claims	# Repetitive Flood Loss Properties	# Severe Repetitive Loss	Score
Snohomish	4 Yrs.	5.70%	2061	841	135	10	22
Skagit	5 Yrs.	4.40%	4457	766	112	10	22
King	3 Yrs.	3.00%	3779	1406	139	9	21
Lewis	3 Yrs.	4.50%	1607	1102	75	3	18
Grays Harbor	3 Yrs.	7.50%	2958	335	24	1	17
Pierce	4 Yrs.	4.20%	1696	474	35	0	14
Thurston	3 Yrs.	6.80%	575	195	15	0	13
Cowlitz	4 Yrs.	2.90%	1655	480	24	2	12
Whatcom	5 Yrs.	3.50%	1196	318	36	0	12
Clark	8 Yrs.	7.50%	1131	160	4	0	10
Mason	4 Yrs.	4.80%	280	119	15	0	10
Pacific	5 Yrs.	3.10%	794	130	5	1	9

Legend							
3 Yrs.	6.5% or More	> 2,000	> 750	> 100	10 or more	4 pts each	
4 Yrs.	4.0 – 6.4%	1,000 – 1,999	300 – 749	50 - 99	7 - 9	3 pts each	
5 Yrs.	3.0 – 3.9%	500 – 999	100 – 299	20 - 49	4 - 6	2 pts each	
6 – 7 Yrs.	2.0 – 2.9%	250 – 499	50 – 99	0 - 19	3	1 pt each	

Impacts

River floods kill people in the United States every year. People caught unprepared and isolated by swift moving or flash flood waters can die from drowning, hypothermia, or trauma. The February 1996 flood caused nine deaths in the Pacific Northwest. Fortunately advances in weather forecasting technology and hydrologic modeling are producing more accurate flood

forecasts that can serve to provide communities with advance warnings. Radio broadcasts, television, and other tools can provide residents of flood prone properties critical information to take necessary precautions to safeguard some belongings and evacuate to safer ground.

Fast rising flood waters can also eliminate opportunity to provide for the safety of domestic animals. Floods kill livestock and pets causing both economic and emotional hardship. Carcasses can become a public health problem if not quickly and adequately disposed of.

Major and moderate flooding frequently inundates low lying roads around Longview resulting in area-wide transportation disruptions. Major state routes such as State Routes 411, 503, 504 and Interstate 5 have both closed multiple times due to floods. As flood waters recede, woody debris and other objects left behind can pose hazards to bridge structures and culverts. Electric, gas, water, and communication utilities are also subject to damage and disruption.

In general, the damaging effects of groundwater flooding are similar to riverine flooding. Some homes may be inundated if they are not elevated above flood levels. Even if a home is elevated above floodwaters, crawl spaces and basements are subject to flooding. Deep water may surround the properties and make it near impossible to enter and exit the property without a boat or makeshift elevated walkway. Septic tanks can become fouled and wells can render useless from contamination. Underground utilities, drainage facilities, and storage tanks are also casualties of groundwater flooding. In many ways groundwater flooding impacts can be worse than surface floods because mitigation is nearly impossible. Sandbagging and pumping have little effect on groundwater flooding and often time the best course of action is temporary relocation or evacuation of affected areas.

Probability of Occurrence

The probability of occurrence in Longview is best explained by discussing the levee systems on the Cowlitz and Coweeman Rivers. The May 18, 1980 eruption of Mount St. Helens in Washington in 1980 resulted in approximately 3.8 billion cubic yards of earth materials being released in a massive landslide. The resulting debris avalanche deposit has continued to erode and introduce sediment materials into the Toutle-Cowlitz-Columbia river system. These sediment materials continue to filter down the river basin and ultimately settle on the river bed along the way. Increasing sediment on the river bed results in a rise of the water levels, over time.

Longview is protected by levees on two rivers: The Cowlitz and Columbia rivers. These levee systems, owned and maintained by the Consolidated Diking Improvement District #1, protect a majority of the urbanized area from being inundated by rising flood waters. The U.S. Army Corps of Engineers (USACE) was directed by Congress to maintain an authorized level of flood protection (LOP) in four communities along the Cowlitz River that is not less than the level described in the *Mount St. Helens, Washington, Decision Document (USACE 1985)*. For Longview, the level of protection exceeds the 100-year recurrence interval. On the Columbia River, upstream dams regulate flow, and the USACE regularly dredges the shipping channel, which helps to maintain capacity for high runoff events. The Columbia River levees along Longview also provide a level of protection exceeding the 100-year recurrence interval.

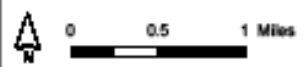
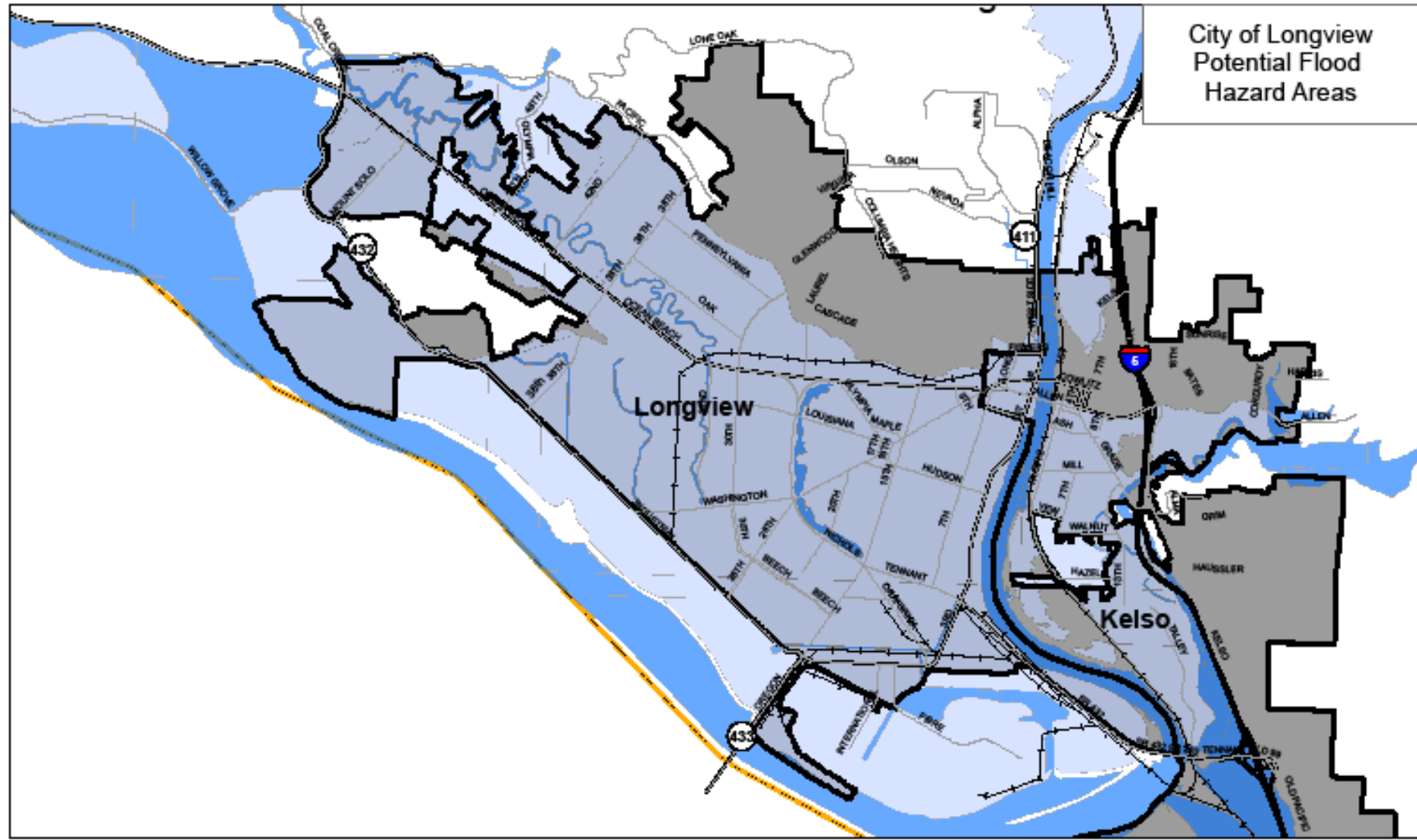
Summary Assessment

The history of flooding within Longview clearly demonstrates a moderate probability of future occurrence. The November 2006 and January 2009 floods suggest that the region remains vulnerable to localized flooding. Several flood events have occurred on Cowlitz County rivers which have exceeded the 100-year flood event. Because of the relative land area and population affected, the county is exposed to a major flood every 4 years, based on the history of the last 41 years (1968 to 2009). Overall, this data clearly indicates that the probability of occurrence of major flood events in the region is high. Therefore, flooding in Longview is assigned an overall moderate risk ranking.

Summary Risk Assessment for Flood in Longview

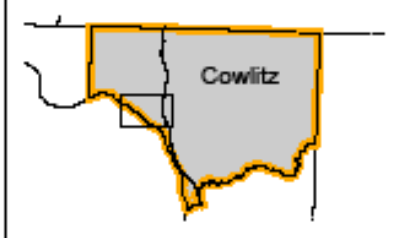
Probability of Occurrence	Vulnerability	Risk
Moderate	High	Moderate

City of Longview
Potential Flood
Hazard Areas



A levy system protects parts of the City of Longview during high water events.

- Major Roads
- Interstate Five (I-5)
- Rail
- 100 Year
- 500 Year



Landslide

Severity

There is no standard approach to measure the severity of a landslide. Severity can be measured in total cost of damages, impacts to transportation or utility systems, or in terms of injuries and fatalities. The severity of a landslide can also be measured in terms of its size and composition: from a thin mass of soil a few yards wide to deep-seated bedrock slides miles across. Despite the difficulty in predicting landslides, the environment provides visual indicators of where the earth is moving. Discovering sites of prehistoric landslides is difficult as telltale signs are often obscured by vegetation or development activities.

The travel rate of movement of a landslide can range from a few inches per month to many feet per second depending on the slope, type of material, and moisture content.

Impacts

The impacts of landslide hazards in Longview are numerous. Landslides can injure or kill people caught in the path of rapid moving earth. No deaths have occurred from a landslide in Cowlitz County. In January 1997 a family of four on Bainbridge Island was buried and killed by 2,000 cubic feet of earth. The fast moving landslide slammed into the back of their home in the early morning hours while the family was still in bed. Past landslides highlight the fact that many homeowners lack insurance covering landslide hazards. Landslide damage can render the property unstable and permanently uninhabitable. Rebuilding onsite is often not an option, so the financial loss for some homeowners is immense. People can suffer great emotional stress and anguish from losing both their home and their property. Small business owners also face similar financial losses and stress.

Landslides can physically damage or destroy almost any infrastructure including buildings, utilities, streets, rail lines, bridges, and tunnels. Communities at large can face transportation disruptions from the loss of critical travel corridors, like State Route 4 along the Columbia River, resulting in lengthy detours. Public health and safety can be compromised from loss of energy, communications, water, and uncontrolled wastewater discharge.

Local governments, public works staff, building inspectors, and other safety officials can become overwhelmed if a landslide hazard impacts a significant portion of the community. Landslide events necessitate monitoring. Buildings and other infrastructure must be inspected to determine whether they are safe for occupancy or use. If a building is deemed unsafe, law enforcement personnel may need to increase patrols to decrease the risk of theft or criminal trespassing.

Probability of Occurrence

A review of local newspaper media, internet sources, Department of Natural Resources landslide data, and Federal Disaster Declarations for Cowlitz County suggest that the incidences of landslides are concurrent with winter storms, flooding, and earthquakes. The majority of landslides in the region are triggered by heavy precipitation in the winter months. The 1998 Aldercrest-Banyon Landslide in the city of Kelso represents a large scale, but infrequent event for the region. Many smaller landslides regularly block roads with debris or washout transportation facilities and rupture utility pipes, or threatened individual homes. Landslides are a continued concern for Cowlitz County residents, due to the vast majority of mountainous terrain and heavy rainfall. Therefore landslides have a high probability of occurrence and are certain to reoccur within a 25 year period.

Historical Occurrences and Impacts Specific to this Jurisdiction

Although not within Longview's jurisdiction, the following major landslide in the city of Kelso highlights concerns within the steep slope areas of Longview due to similar geology, and many smaller landslides have occurred in and around the city of Longview.

April 1998: Aldercrest-Banyon Landslide, Kelso, WA⁴

The first signs of a slide came in February 1998 when the Kelso's public works department staff inspected a sewer line break. At that time no slope movement was observed. A month later homeowners began to experience jammed doors and to notice cracks in foundations and driveway slabs. Then in April, a landslide scarp developed - an offset of more than 18 inches split right through the foundation of one house. The dramatic land movement prompted the city to hire a technical team of engineering geologists and geotechnical engineers to investigate the conditions. The technical team conducted field reconnaissance, inspected numerous residences, and reviewed historical documents and references related to geological problems in the area. What the geologists found in the area was a deep seated landslide that had been inactive for many hundreds or thousands of years. Subsequent analysis of the slide area and laboratory testing results indicated that the movement had been triggered by moisture saturation on the slopes. The area had experienced three years of above-average rain, which was as much as 60% above the 75-year average.

The investigation concluded that, in the area where the primary slide occurred, the movement was generally a translational movement of the old slide debris on the surface of a stiff clay layer, also known as the Cowlitz Formation. As the movement increased, it took other forms including debris flow, block-glide, and near-fluid flows in some areas. Rotational landslides also occurred in the area of the ancient landslides headscarp as the old slide debris moved down the slope. The landslide movement was continuous, but not rapid. Over a nine-month period, April 1998 to January 1999, the scarp expanded to about 3,000 feet in length and displaced about 100 feet vertically. A total of 137 homes were identified within the landslide zone, with 126 of them vacating their homes as part of a disaster relief project.

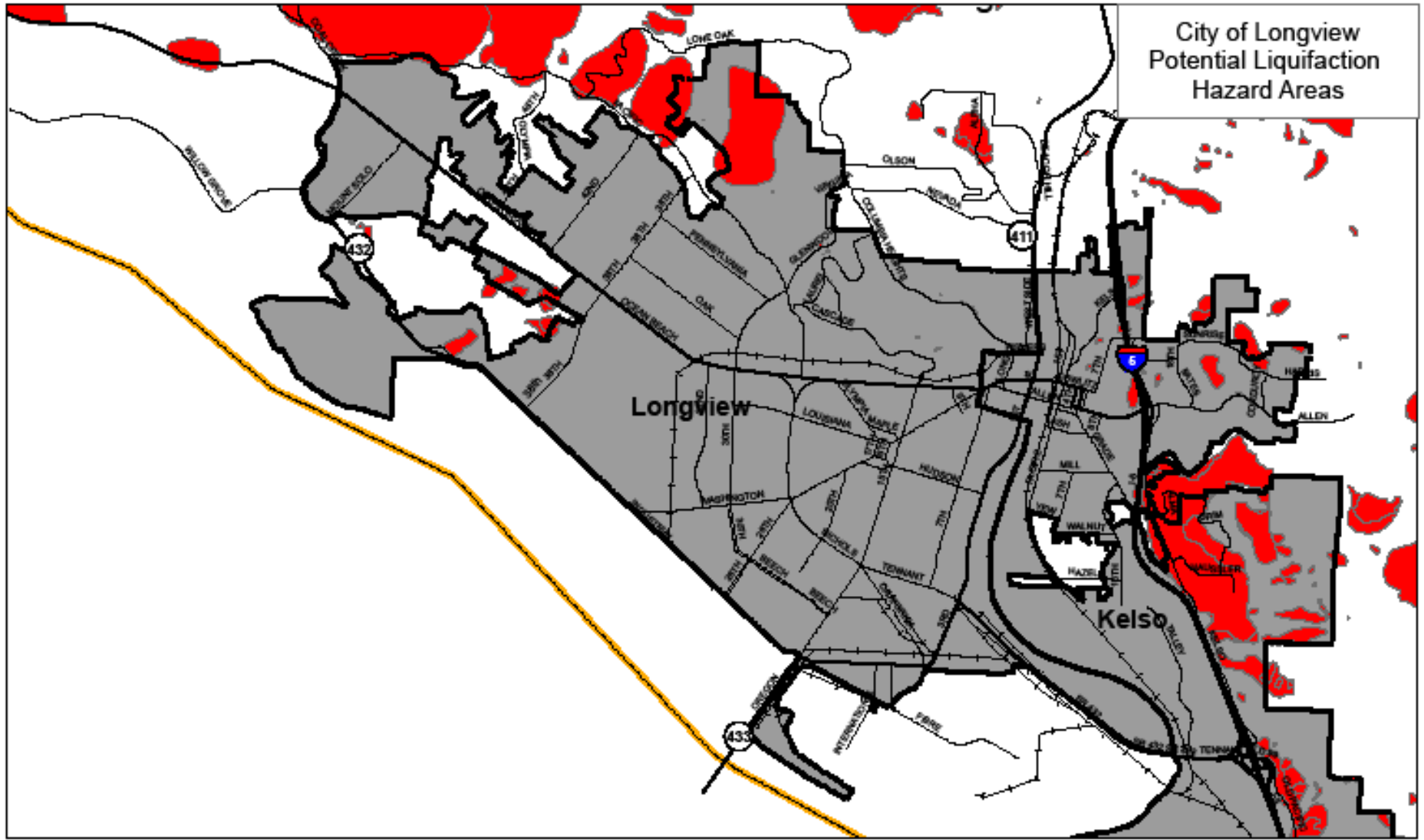
Summary Assessment

The history of landslides within Longview demonstrates a moderate probability of future occurrence. Although the city is mountainous in areas, the probability of occurrence is mitigated through the adoption of Critical Area's Ordinances (CAO). The CAOs adopted by the City and Cowlitz County provide a mechanism for limiting development near steep slopes and ensuring proper engineering is conducted prior to development. Because of the relative land area and population affected, the county is exposed to a major landslide periodically, based on the history of the last 41 years (1968 to 2009). Overall, this data indicates that the vulnerability of major landslide events in the region is moderate. Longview's overall risk of landslide remains moderate.

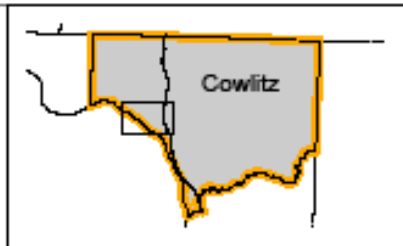
Summary Risk Assessment for Landslide in Longview

Probability of Occurrence	Vulnerability	Risk
Moderate	Moderate	Moderate

City of Longview Potential Liquefaction Hazard Areas



- Interstate Five (I-5)
- +— Rail
- Steep Slopes



Wildland Fire

Severity

The severity of a wildland fire depends upon the extremity of various: the extent of the fire, the size of the population affected, the value of structures that are at risk, and the ability of fire fighters to effectively mobilize and suppress the fire. In general, the cooler, wetter climate of western Washington is less prone to wildland fires because fuel sources have higher moisture content and are less susceptible to ignition. Eastern Washington has a longer and drier fire season and is more vulnerable to lightning strikes than the area west of the Cascades.

Physical damages include loss of valuable timber, wildlife habitat, and recreational areas such as trails, parks, and campground facilities. Smaller rural communities can suffer economic losses from destroyed natural resource lands because their economies are dependent on the timber industry or tourism. Buildings and their contents, utility lines, and parked vehicles are also destroyed. Power and communication disruptions can occur, even in areas unaffected by fires, if major transmission lines are damaged or destroyed. The loss of vegetation on steep slopes increases the risk for mudslides or landslides during the fall and winter months. Stream and creek channels could fill with sediment and debris increasing flood risks. It could take years for fish habitat to recover

Although a major wildland fire has not affected Cowlitz County in modern times, wildland fires are a common occurrence. They have been documented to occur during every month of the year throughout Washington, particularly during prolonged dry periods due to drought or near-drought conditions. Wildfires are common during the local dry season, mid-May through mid-October, but 75% of all wildfires occur between July and September when temperatures are higher.

In Longview, the following conditions influence the extent and severity of wildland fires:

Soil Conditions - The region has a large area of glacial outwash prairie. Prairies are typically vegetated with grasses and other low growing herbaceous plants and shrubs. Prairie soils drain quickly and the vegetation quickly dries out during the summer months. Several Cowlitz County prairies also interface with encroaching Douglas-fir stands, making these areas particularly vulnerable to wildland fires.

Vegetation Type - The severity of a fire is influenced by the composition and extent of fuels available. Vegetation is the primary source of fuels. Dry grasses are prolific; burns rapidly once ignited, and are capable of generating flames up to 40 feet tall.

Access - Road access and mobility for emergency vehicles is critical for wildfire suppression efforts. Limited access delays response time or limits the ability to successfully fight a fire when the necessary equipment and apparatuses cannot make contact with the affected area. There are residential communities in Cowlitz County that have only one road in and out or other

geographical challenges for access. Limited access poses challenges for both evacuation of residents and the ability of fire fighters to mobilize to the affected area.

Impacts

The impact of a wildland fire varies depending upon the size and location of the fire. The heat from intense wind driven flames can destroy virtually any combustible material in its path. People caught off guard by a rapidly spreading fire could suffer burn injuries or other non-burn injuries trying to escape a fire, or possibly be killed. People recreating in remote roadless forest or range lands are especially at risk. The loss of a loved one or the loss of a home or a business is a traumatic experience and fire victims are likely to suffer post traumatic stress disorder following a fire-related loss.

Wildfires result from the interaction of the elements of the fire triangle: fuel, flame, and oxygen. A fire requires all three of these elements to begin and sustain itself. Fuel in a wildland setting is typically vegetation; the type and amount of fuel available and consumed controls the intensity of the fire. The various fuels that occur on a site are referred to as the fuel load. The initial flame may be supplied by lightning or human causes. Oxygen is rarely a limiting factor in wildfires, but a fire's dependence on it does control its behavior, leading to a generally wind-driven and upslope burn pattern.

Wildfire spread is controlled by fuel, weather, and topography. A dry and hot weather pattern or climate can contribute to fire outbreak by increasing the combustibility of fuels. Strong winds can propel the fire quickly across the landscape; gusty, shifty winds can lead to erratic fire behavior that make the fire management and control tasks much more dangerous. Fires will in general burn upslope towards ridge tops in hilly or mountainous areas (although strong winds can alter this). Narrow canyons are especially efficient fire conveyors as they create a chimney-effect to carry the fire forward.

Firefighting can consume significant local and state resources. Even a small wildland fire in Cowlitz County requires rapid containment or suppression in order to protect property. Local fire districts often rely on Department of Natural Resources assets such as helicopters to reach remote areas or provide rapid response. Should multiple wildland fires occur simultaneously in different areas during an extremely warm and dry season, local capabilities could quickly become overwhelmed. This is particularly more problematic when major wildland fires on state or federal lands require the mobilization of fire fighting assets across the western U.S., further stretching local fire fighting capacity

Probability of Occurrence

The documented record of wildland fires in the Longview area suggests that approximately 97 percent of future fires will be five acres or less. The region can expect at least one fire exceeding 100 acres over the next 25 years. A warmer and drier future climate may create more suitable conditions for more frequent or larger fires.

Historical Occurrences and Impacts Specific to this Jurisdiction

While major forest fires are not common in Western Washington, the Yacolt Fire in Clark and Skamania counties is the largest known Washington fire in recorded history. In 1902, the Yacolt Fire burned 238,900 acres (373 square miles) resulting in 38 deaths. More recently, the Jordan Creek Fire occurred near Marblemount in Skagit County and burned 1,162 acres of forest land and threatened several homes in 1998. The cost to fight the Jordan Creek Fire was reported to be in excess of \$3 million dollars. Locally, the Ball Park wildland fire in 1998 in the Ostrander area north of Kelso burned about 60 acres, threatened homes, and expanded so quickly a mobilization of state resources was issued; and in 2001, a fire on Mount Solo in the Longview area burned about 40 acres and threatened homes.

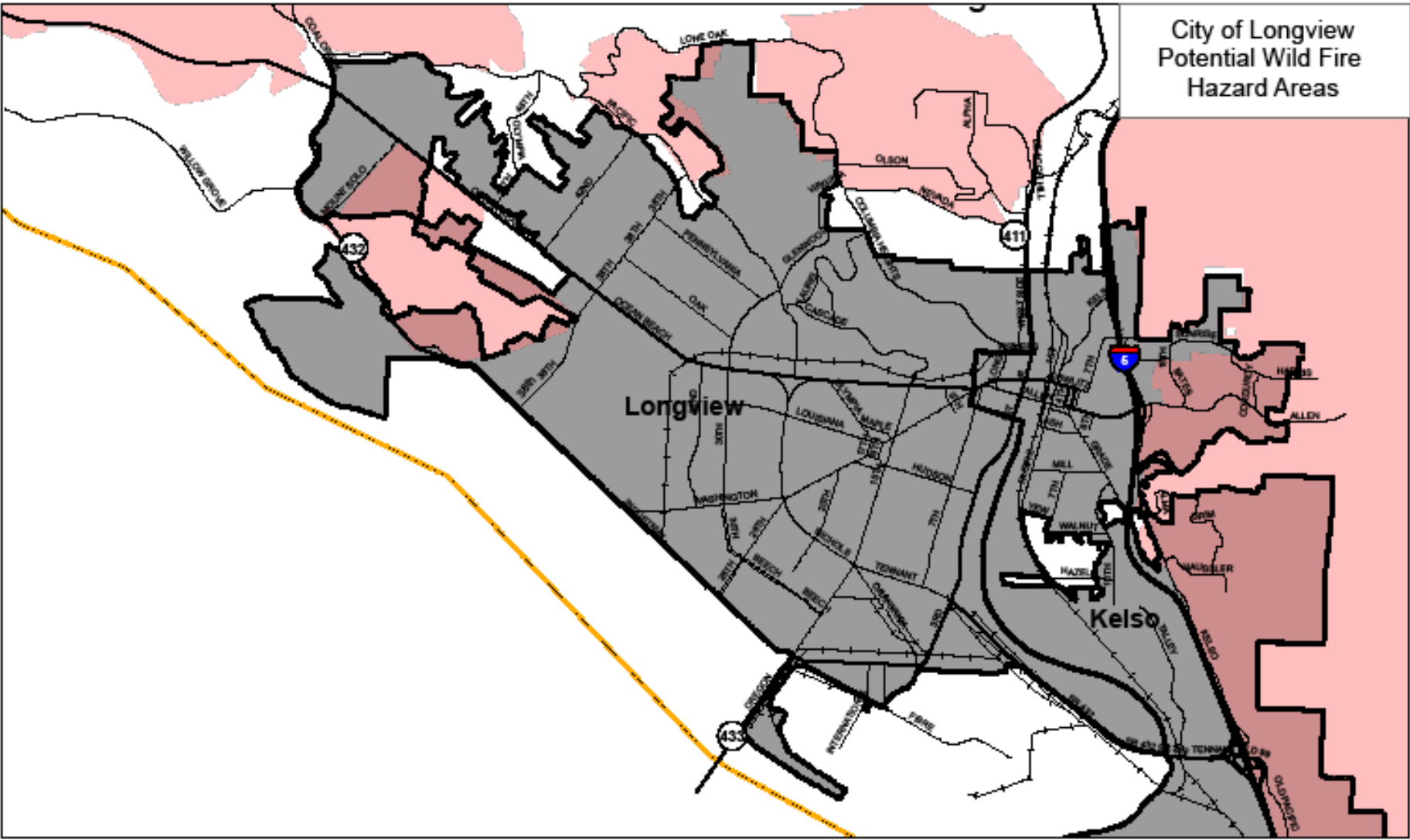
Summary Assessment

The history of wildland fires within Longview area demonstrates a low probability of future occurrence, due to the high amount of precipitation west of the Cascade Mountain Range. Because of the relatively large undeveloped land area and active recreation population, the county is exposed to minor wildland fires periodically during dry summer months. Adoption of the International Building Code and International Fire Code by Longview helps to curtail wildland fires from causing expansive damage by limiting the flammable materials on homes and property, and reducing the probability of a structure fire causing a wildland fire. These factors indicate the vulnerability of the area to wildland fire events in the region is moderate. Longview's overall risk ranking for wildland fires is low.

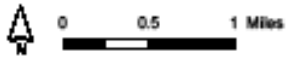
Summary Risk Assessment for Wildland Fire in Longview






Probability of Occurrence	Vulnerability	Risk
Low	Moderate	Low

City of Longview
Potential Wild Fire
Hazard Areas



CWCOC
Cowlitz Watershed Council



-  Industrial_Way
-  Major Roads
-  Interstate Five (I-5)
-  Rail
-  Potential Fire Hazard Areas



Volcanic Hazards

Severity

The city of Longview is susceptible to Mount St. Helens volcanic activity. The peak of Mount St Helens is within Skamania County; however a large portion of the mountain resides in Cowlitz County. With the right winds, the entire County could be blanketed with ash from an eruption. The severity of the hazard would depend on the thickness of the ash deposition. The 1980 eruption of Mount St. Helens blew an ash column 15 miles into the atmosphere above the crater. Over the course of the day of the eruption, nearly 540 million tons of ash was blown by to the east by the prevailing winds on that day.^{vi} Fallout from the ash created complete darkness in Spokane, nearly 250 miles away; dropping one half inch of ash only a few hours after the start of the eruption.

Impacts

Ash fall of a quarter inch or more will reduce motorists' visibility and disrupt nearly every mode of transportation. Wet ash could create hazardous driving conditions and result in traffic injuries or fatalities. Aircraft is especially vulnerable as ash may disable engines and completely obscure pilots' visibility. Air transportation would be grounded in the affected area as long as conditions pose a hazard. Inhalation of ash particles could cause respiratory irritation and pose more serious problems for people with asthma or other respiratory diseases, but this could be mitigated by simply avoiding exposure. Ash can destroy agricultural crops, contaminate surface water sources, clog drainage and sewer systems, and inhibit or destroy mechanical systems such as outdoor heating, ventilation, and air conditioning systems. Ash fall of just a few inches in depth could exceed the structural capacity of some building rooftops and lead to structural failure. Failure could occur with lower depths if ash subsequent precipitation is absorbed. Wet ash has been known to cause power lines to short out. Clean up and recovery would likely be the greatest cost to both the public and private sector. The 1980 eruption of Mount St. Helens posed a major challenge for communities in Eastern Washington. In Yakima, ash removal took ten weeks and cost \$2.2 million.^{vii}

If a large lahar were to occur at Mount St. Helens within the next few decades, the mechanism most likely to be responsible would be rapid melting of snow and ice in the crater or a sudden breakout of Castle Lake. Either mechanism would produce a lahar only in the North Fork Toutle River (and downstream). Rainfall is seldom intense enough to directly produce lahars in the Cascades, and the flows produced by this mechanism tend to be fairly small. Likewise, any landslides occurring on the flanks of Mount St. Helens are likely to be relatively small, especially now that the volcano's height has been lowered by the 1980 eruption.

Snow and Ice at Mount St. Helens

A large volume of snow and ice is presently accumulating in the Mount St. Helens crater, protected by the shade of the high, steep crater walls. This accumulation provides a growing potential water source for lahars in the North Fork Toutle River valley. It is already mixed with

rock debris eroded from the crater walls and this debris would augment the formation of a lahar. It is possible that a large eruption could melt most or all of this snow and ice in a matter of tens of minutes. A very small eruption in 1982 rapidly melted enough snow and ice in the crater to trigger a 4 million m³ (5.2 million yd³) flood that transformed into a lahar and flowed all the way to the Cowlitz River. At the present time (1995), about 53 million m³ (70 million yd³) of snow and ice has accumulated. If completely melted, this would produce about 38 million m³ (50 million yd³) of water. At the present rate of accumulation, the volume of snow and ice will double in about 15 years.

Permanent and seasonal snow and ice also blanket the outer flanks of Mount St. Helens. A sufficient volume exists in winter and spring to produce flank lahars similar in magnitude to those of May 18, 1980, if another large eruption were to occur. Lahars formed on the outer flanks can be expected to be substantially smaller than flows generated in the crater.

Probability of Occurrence

Lahars are the effect of volcanic eruption. Since lahars are the result of volcanic eruptions, the probability of occurrence is the same for these two natural hazards. A large eruption of Mount St. Helens can be expected to inject tephra to altitudes of 20–30 km (12–20 mi) and to deposit tephra over an area of 100,000 km² (40,000 mi²) or more. Wind direction and velocity, along with the vigor and duration of the eruption, control the location, size, and shape of the area affected by tephra fall. Wind direction and velocity vary with both time and altitude, making it impossible to predict the velocity and direction of tephra transport more than a few hours in advance. Westerly winds prevail; thus, significant tephra accumulation from a single eruption is more likely east than west of Mount St. Helens. The calculated probability that ten or more centimeters (four or more inches) of tephra from a large eruption will fall as far as 60 km (40 mi) directly east of Mount St. Helens is 20%; the probability that such an eruption would deposit ten or more centimeters (four or more inches) 60 km (40 mi) directly west of Mount St. Helens is less, between 1% and 2%. Mount St. Helens has repeatedly produced voluminous tephra and has erupted much more frequently in recent geologic time than any other volcano in the Cascade Range. Thus, its influence dominates the annual-probability distribution in Washington and Oregon of ten or more centimeters (four or more inches) of tephra accumulation from eruptions throughout the Cascade Range.

Summary Assessment

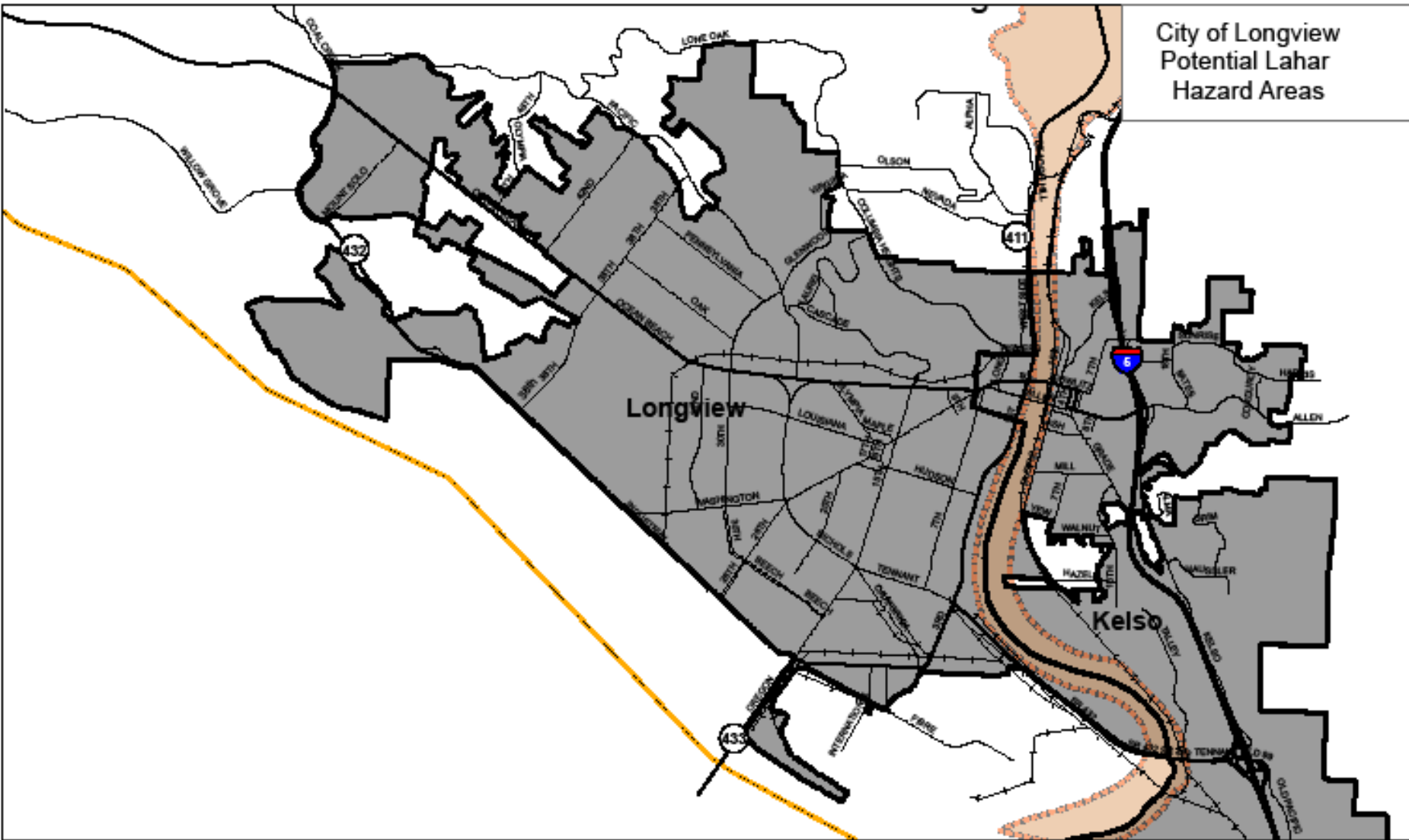
The eruption of Mount St. Helens was catastrophic for the region. While the majority of ash and debris landed east of the mountain, Longview suffered numerous damages. Economic tolls devastated the county's resource economy in timber losses. The county's waterways continue to be dredged of debris from the eruption, to this day, and Longview's water treatment plant on the Cowlitz River has continually been challenged by the high and variable amounts of sedimentation suspended in the water and deposited as sandbars in front of the intake. Since the eruption, our county has been defined by the event in May of 1980 and continues to rebuild from this disaster.


The *Hazard Mitigation Plan for Cowlitz County* aims to compare and contrast the vulnerability our region faces from multiple hazards. This means that storms are evaluated with volcanic eruptions. While storms occur much more frequently than eruptions, eruptions cause a plethora of damages compared to storms. Volcanic eruptions are devastating when they occur. However, they occur very rarely. Longview has assigned a low probability of occurrence and low vulnerability from the effects of volcanic events. Longview’s overall risk ranking for volcanic activity is low.

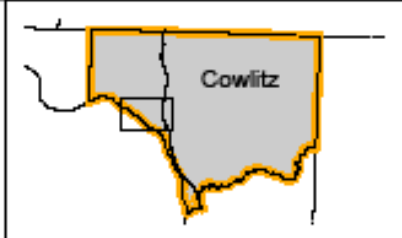
Summary Risk Assessment for Volcanic Events in Longview

Probability of Occurrence	Vulnerability	Risk
Low	Low	Low

City of Longview
Potential Lahar
Hazard Areas



- Major Roads
- Interstate Five (I-5)
- Rail
-  Potential Lahar Flow Zone



ACCOMPLISHMENTS - CITY OF LONGVIEW PRIOR HAZARD MITIGATION PLAN INITIATIVES

Accomplished?	Initiative #	Mitigation Initiative	Initiative Description	Status Explanation
Yes	1	Fire Station 81 Auxiliary Generator	Install a fixed generator.	Completed
No	2	Fire Station 82 Auxiliary Generator	Install a fixed generator.	Insufficient funding
No	3	Perimeter Security Cameras	Install security cameras at water treatment plant.	Water treatment plant replacement at new site was evaluated; new water source and treatment plant now under construction.
In Progress	4	Fencing & Security to Reservoirs and Other Facilities	Implement appropriate fencing and security enhancements.	Numerous facilities; some upgrades completed.
In Progress	5	System Telemetry – SCADA (Water)	Implement telemetering system and alarm notification between remote facilities and the Operations Center.	SCADA system design in progress.
In Progress	6	Emergency Power (Sewer)	Purchase and install fixed or portable generators.	Numerous facilities; emergency power is being provided as pump stations are rehabilitated.
No	7	Emergency Power (Water)	Purchase and install fixed or portable generators.	Insufficient funding; treatment plant replacement is priority for utility system funding.
In Progress	8	Regional Water Treatment Plant Rehabilitation	Repair/replace/expand water treatment plant.	New water source and treatment plant now under construction.
In Progress	9	System Telemetry – SCADA (Sewer)	Implement telemetering system and alarm notification between remote facilities and the Operations Center.	SCADA system design in progress.

CITY OF LONGVIEW - HAZARD MITIGATION ACTION PLAN MATRIX

Initiative #	Mitigation Initiative	Included in a Capital Facilities Plan?	Applies to New or Existing Assets	Hazard(s) Mitigated	Goals Met (from list below)	Lead Agency	Estimated Cost (2011 Dollars)	Sources of Funding	Time-line
1	Replace Existing Water Treatment Plant with Mint Farm Regional Water Supply and Treatment Plant	Yes	Existing	Earthquake, Storm, Flood, Volcanic Event	1,2,3	City of Longview	\$38 million	Federal & State Grants & Loans; Utility Rates; BHWSO	2 years
2	Water Utility Control System Telemetry – SCADA. Phased implementation to complete all sites.	Yes	Existing	Earthquake, Storm, Flood	1,2,3	City of Longview	\$1 million	Utility Rates	3 years
3	Sewer Utility Control System Telemetry – SCADA. Phased implementation to complete all sites.	Yes	Existing	Earthquake, Storm, Flood	1,2,3	City of Longview	\$2 million	Utility Rates	5 years
4	Drainage Utility Control System Telemetry – SCADA. Phased implementation to complete all sites.	Yes	Existing	Earthquake, Storm, Flood	1,2,3	City of Longview	\$500,000	Utility Rates	3 years
5	Fire Station 82 Emergency Generator	No	Existing	Earthquake, Storm, Flood	1,2,3	City of Longview	\$100,000	Local	3 years
6	Water System Emergency Generators. Phased implementation to provide fixed or portable generators at all sites.	Yes	Existing	Earthquake, Storm, Flood	1,2,3	City of Longview	\$800,000	Utility Rates	8 years

CITY OF LONGVIEW - HAZARD MITIGATION ACTION PLAN MATRIX

Initiative #	Mitigation Initiative	Included in a Capital Facilities Plan?	Applies to New or Existing Assets	Hazard(s) Mitigated	Goals Met (from list below)	Lead Agency	Estimated Cost (2011 Dollars)	Sources of Funding	Time-line
7	Sewer System Emergency Generators. Phased implementation to provide fixed or portable generators at all sites.	Yes	Existing	Earthquake, Storm, Flood	1,2,3	City of Longview	\$800,000	Utility Rates	10 years
8	Replace City Hall Emergency Generator.	Yes	Existing	Earthquake, Storm, Flood	1,2,3	City of Longview	\$300,000	Local	3 years
9	Emergency Generator at City Shop	No	Existing	Earthquake, Storm, Flood	1,2,3	City of Longview	\$300,000	Local; CTA	5 years
10	Install Vactor Dumping and Drying Beds Facility	Yes	Existing	Storm, Flood	2,3,4	TRRWA	\$400,000	Utility Rates	1 year

List of Goals

- 1) **Protect life:**
- 2) **Protect property:**
- 3) **Promote a Sustainable Economy:**
- 4) **Protect the Environment:**
- 5) **Increase Public Preparedness for Disasters:**

CITY OF LONGVIEW - MITIGATION STRATEGY PRIORITY SCHEDULE

Initiative #	Initiative Name	Benefits (High, Medium, or Low)	Costs (High, Medium, or Low)	Do Benefits Equal or Exceed Costs? (Yes or No)	Priority (High, Med., Low)	Is Project Grant Eligible? (Yes or No)	Can Project be Funded Under Existing Programs/Budgets? (Yes or No)	Initiative Duplicated in Another Jurisdiction? (Yes or No)
1	Replace Existing Water Treatment Plant with Mint Farm Regional Water Supply and Treatment Plant	High	High	Yes	High	No	No	No
2	Water Utility Control System Telemetry – SCADA. Phased implementation to complete all sites.	Medium	High	Yes	High	No	No	No
3	Sewer Utility Control System Telemetry – SCADA. Phased implementation to complete all sites.	Medium	High	Yes	High	No	No	No
4	Drainage Utility Control System Telemetry – SCADA. Phased implementation to complete all sites.	Medium	Medium	Yes	High	No	No	No
5	Fire Station 82 Emergency Generator	Medium	Medium	Yes	Medium	Yes	No	No
6	Water System Emergency Generators. Phased implementation to provide fixed or portable generators at all sites.	Medium	Medium	Yes	Medium	Yes	No	No
7	Sewer System Emergency Generators. Phased implementation to provide fixed or portable generators at all sites.	Medium	Medium	Yes	Medium	Yes	No	No

CITY OF LONGVIEW - MITIGATION STRATEGY PRIORITY SCHEDULE

Initiative #	Initiative Name	Benefits (High, Medium, or Low)	Costs (High, Medium, or Low)	Do Benefits Equal or Exceed Costs? (Yes or No)	Priority (High, Med., Low)	Is Project Grant Eligible? (Yes or No)	Can Project be Funded Under Existing Programs/Budgets? (Yes or No)	Initiative Duplicated in Another Jurisdiction? (Yes or No)
8	Replace City Hall Emergency Generator	Medium	Medium	Yes	Medium	Yes	No	No
9	Emergency Generator at City Shop	Medium	Medium	Yes	Medium	Yes	No	Yes
10	Install Vector Dumping and Drying Beds Facility	Medium	Low	Yes	Medium	No	Yes	No

Explanation of Benefits

- **High:** Project will have an immediate impact on the reduction of risk exposure to life and property.
- **Medium:** Project will have a long-term impact on the reduction of risk exposure to life and property, or project will provide an immediate reduction in the risk exposure to property.
- **Low:** Long term benefits of the project are difficult to quantify in the short term.

Explanation of Costs

- **High:** Would require an increase in revenue via an alternative source (i.e. bonds, grants, fee increases) to implement. Existing funding levels are not adequate to cover the costs of the proposed project.
- **Medium:** Could budget for under existing work-plan, but would require a reapportionment of the budget or a budget amendment, or the costs of the project would have to be spread over multiple years.

- **Low**: Possible to fund under existing budget. Project is part of, or can be part of an existing ongoing program.

Explanation of Priorities

- **High Priority**: A project that meets multiple plan objectives, benefits exceeds cost, has funding secured under existing programs or authorizations, or is grant eligible, and can be completed in 1 to 5 years (i.e., short term project) once project is funded.
- **Medium Priority**: A project that meets at least 1 plan objective, benefits exceeds cost, funding has not been secured and would require a special funding authorization under existing programs, grant eligibility is questionable, and can be completed in 1 to 5 years once project is funded.
- **Low Priority**: Any project that will mitigate the risk of a hazard, benefits exceed costs, funding has not been secured, project is not grant eligible, and time line for completion is considered long term (5 to 10 years).

ⁱ University of Washington. 2002. Nisqually Quake Damaged Nearly 300,000 Puget Sound Households. Newswise.com, November 20, 2002. Online article.

<http://www.newswise.com/articles/view/?id=QUAKE2.UWA>

ⁱⁱ Hazards & Vulnerability Research Institute. 2008. The Spatial Hazard Events and Losses Database for the United States, Version 6.2 [SHELDUS Online Database]. Columbia, SC: University of South Carolina. Available from <http://www.sheldus.org>.

ⁱⁱⁱ Preliminary Damage Assessment for Declaration 1817. Federal Emergency management Agency (FEMA). January 2009

^{iv} The preliminary damage assessment (PDA) process is a mechanism used to determine the impact and magnitude of damage and resulting needs of individuals, businesses, public sector, and community as a whole. Information collected is used by the State as a basis for the Governor's request for a major disaster or emergency declaration, and by the President in determining a response to the Governor's request (44 CFR § 206.33).

^v Thurston County Emergency Management. 2009. Supplemental Justification Report.

^{vi} Tilling, Robert, I. et.al. 1990. Eruptions of Mount St. Helens: Past, Present, and Future, U.S. Geological Survey Special Interest Publication,

^{vii} Ibid