

Canada thistle is an aggressive perennial that was introduced into the United States in the 1600s. By 1954, forty three states had already declared it a noxious weed. This weed can be found infesting crops lands, pastures, rangeland, roadsides and non-crop lands. Canada thistle can tolerate a variety of soils and can easily infest an area in a few years.

Flowers are rose-purple to lavender. Once plant can easily produce between, 1,000 to 1,500 seeds per flower.



Where to get more information on Noxious Weeds:

Washington State Noxious Weed
Control Board

1111 Washington St.
Olympia, WA 98504-2560
(360)902-2053

Website:

<http://www.nwcb.wa.gov>

Washington State Department of
Agriculture

1111 Washington St.
Olympia, WA 98504-2560
<http://www.agr.wa.gov>

WSU Extension Office;
Cowlitz County
1946 3rd Avenue
Longview, WA 98632
(360)577-3014

Cowlitz County Noxious Weed
Coordinator

Angelica Velazquez
(360)577-3030 ext.2540

Email:

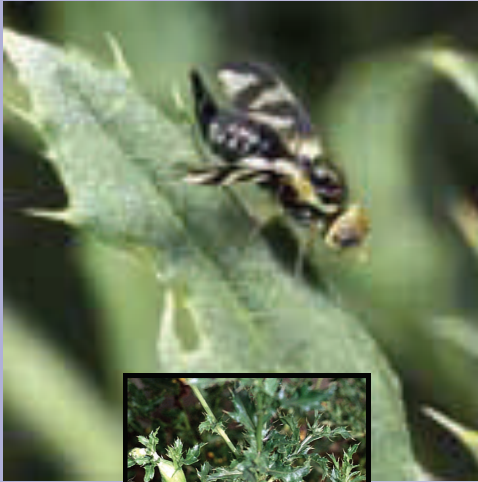
velazqueza@co.cowlitz.wa.us

Canada thistle *Cirsium arvense*



**Cowlitz County Noxious
Weed Control Board**
207 Fourth Avenue North
Kelso, WA 98626
Tel. (360)577-3030
Fax (360)636-0845

Integrated Pest Management Control Measures:



Biological Control

Several insects are currently being used to reduce Canada thistle infestations. These include: The gall fly *Urophora cardui*, the stem mining weevil *Ceutorhynchus litura*, the seed head weevil *Larinus planus*, and the flea beetle *Altica carduorum*. Some of these insects have become naturalized and continue to help control the spread of thistle throughout the country. Other beneficial insects can be introduced into areas with large infestations.

The United States Department of Agriculture and partner agencies continue to study other potential beneficial insects to help fight infestations of noxious weeds in the

Mechanical:

- **Mowing** can be an effective means of controlling seed production. Plants will need to be mowed several times during the growing season.
- **Disking or plowing or hand pulling** IS NOT EFFECTIVE

Cultural:

- **Healthy grasses** can promote competition and reduce weed infestation. Fertilize during the spring and early summer months to promote healthy growth of desirable vegetation.
- **Plastic/cloth weed barriers** can help decrease re-growth of undesirable vegetation.
- In large crop land fields, **plant competitive** crops like alfalfa and perennial grasses to reduce weed infestations.

Biological:

- There are several biological controls being used in the United States. We have one; The Gall fly; *Urophora cardui* produces galls on plants affecting flower production.

Chemical:

Spring to fall foliar spray – Best when applied to growing plants but before flower sets

Weedmaster,

Milestone VM,

Garlon 3A,

Stinger,

Transline,

Banvel,

Vanquish,

RoundUp*

Check each chemical label for proper use, application restrictions and relevant information